



# *2015 Annual Report*





## Welcome to the 75th PEIFA Annual General Meeting

<b>Table of Contents</b>	<b>Page #</b>
<b>Meeting Agenda</b>	<b>2-3</b>
<b>2015 Board of Directors</b>	<b>4</b>
<b>President's Message</b>	<b>5-6</b>
<b>Executive Director's Report</b>	<b>7-8</b>
<b>Corporate Relationships</b>	<b>9</b>
<b>Staff Reports</b>	<b>10-12</b>
<b>Canadian Federation of Agriculture Report</b>	<b>12-14</b>
<b>Resolution Process</b>	<b>15</b>
<b>2016 Resolutions</b>	<b>16-21</b>
<b>Past—Presidents</b>	<b>22-23</b>
<b>Financial Statements</b>	<b>24-39</b>
<b>2016 Budget</b>	<b>40</b>
<b>Nomination Process</b>	<b>41</b>
<b>Member Organization Reports</b>	<b>42-53</b>
<b>Meeting Sponsors</b>	<b>54-61</b>
<b>Speakers Bios</b>	<b>62-67</b>

*PEIFA Federation of Agriculture*





# **PEI Federation of Agriculture**

## **75<sup>th</sup> Annual General Meeting**

**January 29, 2016**

**Confederation Centre of the Arts**

**Charlottetown, PEI**

**Agenda**

9:00 – 10:00 AM

**Registration & Trade Show**

10:00 AM

**Call to Order**

Approval of Agenda

Approval of 2015 Minutes

Nominations Committee Report

Auditors Report – BDO Canada

2016 Budget – Robert Godfrey

10:45 AM

**Canadian Federation of Agriculture Report**

Ron Bonnet, CFA President

11:00 AM

**Electricity Rate Classification and Rate Changes**

Maritime Electric

Angus Orford - VP Customer Service

Kim Griffin – Manager Corporate Communication and Public Affairs

**11:45 AM**

**Lunch**

12:45 PM

**President's Report: Ms. Mary Robinson**

**Presentation of the Hon Gilbert R. Clements Award for Excellence**

**in Sustainable Agriculture**

**Remarks from Hon. Alan McIsaac, Minister PEI Agriculture & Fisheries**

**Remarks from Hon. Lawrence MacAulay, Minister of Agriculture and Agri-Food Canada**

1:30 PM

**Municipal Amalgamation - The Evolution of Municipal Governance**

Christine MacKinnon – Director of Implementation, Municipal Affairs

Department of Communities Land and Environment



2:00 PM	<p><b>Water Act – The Next Steps</b></p> <p>George Somers, Manager of Drinking Water, Land and Systems Protection Department of Communities Land and Environment</p>
2:20 PM	<p><b>AAFC Research: Spring vs. Fall Plowing in Potato Production Systems</b></p> <p>Vernon Rodd, Research Scientist Agriculture and Agri-Food Canada</p>
2:40 PM	<p><b>Farm Credit Canada – The Value of Farm Associations</b></p> <p>Faith Matchett, FCC Vice-President</p>
2:55 PM	<p><b>Agriculture Awareness Committee – How to get involved</b></p> <p>Maryella Maynard – Committee Chair</p>
3:10 PM	<p><b>Introduction of 2016 Board of Directors &amp; Prize Draws for Members in Attendance</b></p>
3:15 – 4:30 PM	<p><b>Resolutions and Closed Session for PEIFA Members Only</b></p>

***2016 Excellence in Agriculture Banquet  
Memorial Hall, Confederation Centre of the Arts***

**Host—Mr. Robert Godfrey, Executive Director**

6:30 PM	Reception & Cash Bar
7:00 PM	Recognition of PEI Federation of Agriculture Past Presidents
7:10 PM	Banquet
8:00 PM	<p>Presentation of Agriculture Awareness Award in Recognition of Outstanding Efforts by the PEI Federation of Agriculture and Gordon &amp; Sandra Sobey</p> <p>Presentation of the 2016 Agriculture Employee and Employer of the Year Awards by the PEI Agriculture Sector Council</p> <p>Presentation of the 2016 Department of Agriculture and Fisheries Minister's Dedication to Agriculture Award</p>
8:35 PM	Presentation of 75 <sup>th</sup> Anniversary Video
8:50PM	<b>Guest Speakers: Gary Evans and Dennis King</b>
9:15PM	Closing Remarks by PEIFA President

## 2015 PEIFA Board of Directors

### PEIFA EXECUTIVE MEMBERS

- Mary Robinson - President
- David Mol - 1st Vice President
- Grant Compton—2nd Vice President
- Patrick Dunphy – Exec Rep – PEI Young Farmers
- Fred Dollar - Member at Large
- Alvin Keenan - Past President

### COMMODITY BOARD MEMBERS

- Janet Murphy                      Chicken Farmers of PEI
- Ron Maynard                      Dairy Farmers of P.E.I.
- Nathan Burns                      Egg Producers of P.E.I.
- David Mol                          Island Grains & Proteins Council
- Jeremy Stead                      PEI Cattle Producers
- Isaac Thompson                   PEI Fur Breeders Association
- Dale Murray                      PEI Hog Commodity Marketing Board
- Paul Croken                        PEI Horticulture Association
- Sandy MacKay                    PEI Certified Organic Growers Cooperative
- Don Godfrey                      PEI Potato Board
- Richard Farmer                   PEI Wild Blueberry Growers Association
- Pat Dunphy                        PEI Young Farmers Association
- Harry Elsinga                      PEI Sheep Breeders Association
- Willem Vander Leeuw           PEI Strawberry Growers Association
- John Rowe                         PEI Woodlot Owners Association

### COUNTY REPRESENTATIVE MEMBERS

- |                 |               |         |                  |             |
|-----------------|---------------|---------|------------------|-------------|
| • Prince County | Justin Rogers | Coleman | Eric Phillips    | O’Leary     |
| • Queens County | Fred Dollar   | Winsloe | Jennifer MacLeod | Breadalbane |
| • Kings County  | Paul Gallant  | Souris  | Phillip Bulpitt  | Cardigan    |

## 2015 President's Report



It has been an honour and pleasure to serve as President of the Prince Edward Island Federation of Agriculture this year. As we celebrate our 75<sup>th</sup> year, we can take great pride that our federation continues to be the largest general agricultural organization in PEI -diligently working to nurture the family farm and striving to help Island agriculture thrive now and well into the future.

For me, this has been a full year yet it seems to have passed so quickly. I expect many Presidents have felt the same way over the past 75 years, as each year brings its own set of unique challenges and circumstances. Agriculture is a tall tree in this province and catches a lot of wind. I feel this year we have tackled much and have done it with an impressive group of people – our members, board and staff.

This AGM marks the retirement of Eric Philips from the position of Prince Country Rep. I thank him for the many hours he has devoted to our organization. We wish him well with his continued work in Western Prince, especially at the Potato Museum. Eric has always been a solid voice around the table and we may continue to call on him for assistance on occasion!

Looking back over 2015, just as planting was getting underway, we said farewell to our Executive Director, John Jamieson, as he moved on to become our Provincial Deputy Minister of Agriculture & Fisheries. Although we were sad to see John go, the talent and strength of applicants competing for the position was encouraging. After much consideration the hiring committee was pleased to offer the position to Robert Godfrey.

Special thanks to JoAnn Pineau for filling the role of interim ED, as well as to the rest of our staff (Andrew, Charlotte, Cliff, and Tim) for going above and beyond the four months we were without a full time ED. With Robert now at the helm, we are continuing to move forward. Some of the issues we are addressing include: Municipalization; Land Use; Taxation; Protection of Farm Land and Right to Farm; The Water Act; Proposed electricity rate changes; Trespassing and ATV damage; Public Understanding of how Agriculture works and its contribution to our province, and so on.

I am delighted to see efforts such as “Islanders for Farmers” - a positive voice for Island Agriculture, helping bridge the gap between those of us who understand farming and those who do not. It is disheartening when we see acts of vandalism against farms. I believe these acts are born out of a lack of farming awareness. We all need to do our

## 2015 President's Report continued ...

part to help our neighbours appreciate what we do and why we do it. This year our Federation is partnering with the province to offer PD camps to get non-farm kids onto a farm for a day of hands-on learning. This will not only help them understand what we do but will offer them a glimpse into agriculture as a career opportunity and way of life. I encourage you to seek out the Ag Awareness Committee or our Federation staff to learn more about simple actions you can take to help our non-farming Islanders understand and hopefully support us.

This is an exciting time for Island Agriculture. We have a strong voice. As our Federation representatives sit at the table with different parties - whether those parties be government, utilities or private organizations - we are told again and again that those parties need the support of our farm organization in order for their efforts to succeed. We have a Premier who wants to showcase our province as Canada's Food Island. For the first time ever, we have both Provincial and Federal Ministers of Agriculture with a strong history and direct connections to Island farming. A farm community that is engaged and working together is a powerful force.

As we look to the year ahead, we are ready to face the many challenges with a terrific board, executive, staff and membership. Prince Edward Island Agriculture has always been the backbone of our Island community and economy and shows much promise for future generations. I want to thank the Executive, Board, and Staff for the support and encouragement shown to me this year. I look forward to the upcoming year and working with all of you to improve the sustainability of Island farms and farm families.

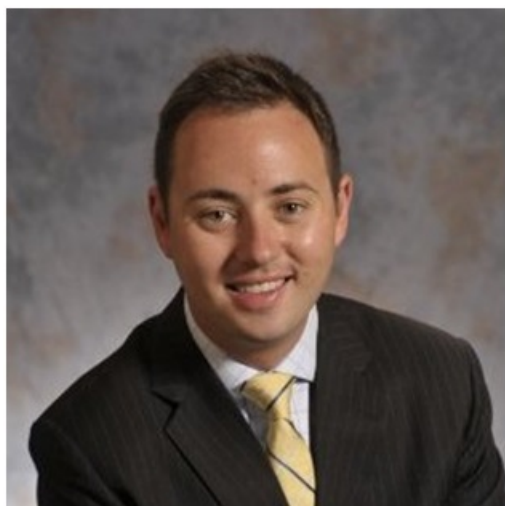
Thank you,



Mary Robison

President

## Executive Director's Message



The Prince Edward Island Federation of Agriculture is celebrating its 75<sup>th</sup> Anniversary this year. That is an achievement that speaks to the hard work and dedication of many people since the organization's inception in 1941. It is not an achievement to be taken lightly. The organization has survived a World War, the mechanization of farm operations, the green revolution, the consolidation of farms, the invention of the computer and the internet, commodity price swings, and countless diseases and viruses that have affected both livestock and crops.

The organization has survived, in my mind, because of the common bond the farming community has – we respect our neighbours and understand that we are stronger when we work together; that there is strength in unity. The organization has built a reputation over the last 75 years that is unmatched and it is because the organization is always looking forward, focusing on the solutions and not the problems. In celebrating our long history recently, I had the pleasure of meeting with some of our older members and talking to them about how the Federation has played a role in developing public policy on PEI. One story that stands out is how hard the Federation pushed for electricity to be extended to all parts of rural Prince Edward Island. In an age when we are fighting to have broadband high speed internet access across rural PEI, it is amazing to think how far we as a society, let alone as an organization we have come. It is truly something worth celebrating.

But we have much more to do. We are facing rising costs, a new Water Act for the province, municipal amalgamation and questions about our environmental sustainability practices. We are facing all of this while dealing with a growing rural/urban divide where emotion often trumps facts in many debates.

We are taking steps on all of this. With rising costs, including electricity, we have been in talks with Maritime Electric about how to ensure the price farmers are paying is fair. We recently discovered some farmers are being classified incorrectly and paying too much for power. They have committed to correcting this and to work with the Federation to ensure farmers are treated fairly as they look to raise rates.

The Federation participated in the consultation process for the Water Act this past fall. Presenting both privately and publicly, the Federation spoke to the importance of water in farm operations and laid out nine recommendations for the Government's consideration as they move to draft the legislation this year. This includes the need to slow the process down, and collect the relative data locally to ensure the farming community is not hindered or unfairly regulated as a result of the legislation. We are told draft legislation will be coming later this year, and the Federation intends to continue to voice the importance of agriculture's access to water throughout the process.

With regards to municipal amalgamation, the subject has raised a great deal of concern for some while others look at this change as something worth doing. In efforts to gather all the facts, the Federation has met and spoke with government officials numerous times to ensure we are being properly informed. Government is aware that the Federation wants to be involved in any development on this file and has been accommodating to that request. This issue will continue forward this year.



## Executive Director's Message continued ...

In addition, agriculture's environmental sustainability practices continue to come under scrutiny. The Federation is working with stakeholders on the Action Committee for Sustainable Land Management and the various watershed projects under this group. The Federation is working on the Farming 4R Island initiative dealing with nutrient management and the efficient usage of fertilizer. The Environmental Farm Plan continues to be a model program administered by the Federation with over 100 of them completed in the 2015 calendar year. The sprayer calibration program is another example of where the Federation is working to ensure farmers have all the tools they need to operate in the most sustainable manner. These projects and others are something we should be proud of as an organization. They tell a story, to government and the public, about how we have been squaring up to the environmental challenges of today. The Federation will continue these types of projects as innovative ideas continue to come forward. The Federation is an organization that believes in progress, and I intend to continue with that tradition.

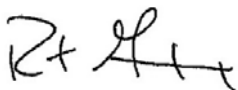
I have the great pleasure of joining the Federation as the Executive Director in August of this past year. It is a great honor for me to take on this role and it certainly has been an interesting start. I tell people that my job is something like farming – no two days are ever the same and you must adapt to the changing events of the day to get things accomplished. The passion for the industry I have comes from growing up on a beef and potato operation in Cornwall. My grandfather Harold started that operation at the age of 16, my father Don has carried it on, and my younger brother Michael will carry it forward for this generation. My family's involvement in the Federation runs deep. My grandfather served as President of the organization in 1984-85, and my father has been serving on the Board of directors for the last few years. I have come to the job with the keen sense of the organization's history, the knowledge of many of our challenges as an industry and energy to carry the Federation forward.

I also have the great benefit of having a strong Board of Directors that can always be counted on to make key decisions related to the direction of the Federation and help me in anyway they can. Eric Phillips served his last meeting this past week and I know he will be missed. I thank him for his service and look forward to meeting our new Board member after this meeting.

This is not to mention the staff of the Federation. I have inherited a great team of people who come to work every-day ready to meet the challenges we face. I truly could not ask for a greater group of people.

I am looking forward to 2016 and to getting to know more of you and to continue working to strengthen this historic organization and build upon its reputation. My door is always open, my phone is always on and I am always happy to chat.

I wish you all a prosperous 2016.

A handwritten signature in black ink, appearing to read "Rt Godfrey".

Robert Godfrey

Executive Director



## Corporate Relationships

**PEI Federation of Agriculture  
2015 Corporate Partner**



**Farm Credit Canada  
Financement agricole Canada**

**PEI Federation of Agriculture  
2015 Corporate Sponsor**



**Scotiabank**



## Advance Payment Program Report

The 2015-16 production year for the Advance Payment Program saw the implementation of a number of changes to the Agriculture Monetary Policies Act that improved both the benefit to the producers and the administrative workload. The most significant one to affect our PEI base was the elimination of the Administrators holdback. This change lowered the advance rates by 1% but ultimately put more cash at the producer's disposal and reduced the bookwork associated with the liability holdback previously employed. The addition of organic grains and organic cattle to the APP products portfolio brought some new participants into the program as did the increased cattle market pricing combined with the push by Atlantic Beef Products to process more Holstein steers.

Additional changes to the Agriculture Monetary Policies Act are expected prior to the 2016-17 Production year some of which may include the incorporation of multi-year documentation, and the addition of one or two new security options.

The 2015-16 production year saw a slight decrease of less than 2% in total loans issued to 301 but a 1.4% increase in the value to \$43,172,303.41 A few more of the Severe Economic Hardship loans from the 2008-09 production year were forwarded to AAFC for collection in 2015 bringing the outstanding value of the S.E.H. files on hand to just over \$1 million.

### Advanced Payment Program Staff

**Andrew Wood**, APP Administrator, awood@peifa.ca

**Tim Seeber**, APP Administrator, seebertw@eastlink.ca

## Farmer Assistance Program

For many years, the PEI Federation of Agriculture and the PEI Department of Agriculture and Forestry have partnered to offer the Farmer Assistance Program. This is a service that provides **confidential**, professional counselling services to farmers and their immediate families. The annual budget remains at \$ 12,500.

The program recognizes that some problems can affect home life and work performance and that a trained professional counsellor can help resolve these problems. While the service is confidential we have aggregate statistics from the program. In 2015 the program saw 29 new clients, and 89 total clients for 117 total interviews. The major issues were:

Farm Family Relationships	Marital Relationships	Parent – Child Conflict	School Refusal
Mental Health Including Depression and Anxiety	Separation/Divorce	Adolescent Behavior	
Addiction	Farm Management Issues		

The program is managed by Frank Bulger. Frank is a registered social worker at the master's level and has more than thirty years of experience in practicing social work in the local Family Court and the greater community. Mr. Bulger has spent the majority of his career assisting families through the complex process of separation including the formulation of parenting plans for the children. Also working with the program are Jan Henry and Caroline LeBlanc.

For Information or to Schedule an Appointment call:

(902) 626-9787

**Atlantic Employee Assistance Providers**

## Farm Safety Report

This past year was another busy year for the Farm Safety Program. Many training courses were scheduled in first aid and CPR, WHMIS, forklift, welding safety and tractor safety. We have many farmers and farm employees looking to update training each year and we are happy to be able to offer any training courses that are needed within the industry. This past year we received project funding from the FCC Ag Safety Fund administered by the Canadian Agricultural Safety Association which allowed us to train 30 people in tractor safety at a discounted rate.

The farm safety program worked again this past year with the grade 10 Agriculture Academic Diploma Program. We organized a tractor safety day in May at Kensington Agricultural Services and a safe animal handling day in September at Orwell Corner Historic Village.

This past spring we held our 4<sup>th</sup> Progressive Agricultural Safety Day for youth at the Kensington Fire Hall. This hands on educational event was offered to children who live on farms or who have an interest in agriculture. Children learned about tractor safety, how to put out fires, basic first aid, livestock safety and life after a farm accident. Interest in this event is growing and we look forward to hosting it again in 2016.

In October I attended the Canadian Agricultural Safety Association Conference in Saskatoon. I had the opportunity to see how farm safety is approached in other areas, as well as had the privilege of participating in the planning of future Farm Safety Weeks. CASA will be hosting this year's conference in Charlottetown and the PEIFA Farm Safety Program is assisting with the planning of the event.

We wrapped up 2015 by completing our two year milk house safety project. The intent of this project was to offer dairy farmers and their workers a resource to help them stay safe in the milk house. This training focused on the importance of proper storage and handling of chemicals and the importance of checking and maintaining equipment. In addition to developing a video resource, WHMIS courses were also scheduled. The Federation will be offering WHMIS courses in the future and the video is available for viewing on the PEIFA webpage. Project partners included the Dairy Farmers of PEI, Workers Compensation Board of PEI and the PEI Agriculture Sector Council. The project was funded through the FCC Ag Safety Fund administered by the Canadian Agricultural Safety Association.

Safety training is ongoing in many areas such as first aid and CPR, forklift, tractor safety, welding, confined spaces, WHMIS and class 3A driver training. I encourage anyone looking to attend or update training to contact the PEIFA office. We keep our website up to date with farm safety articles, training opportunities and scheduled events. Visit us online at [www.peifa.ca](http://www.peifa.ca).

**Charlotte Crooks** - Farm Safety Program - [charlottec@peifa.ca](mailto:charlottec@peifa.ca)



## Environmental Farm Plan Report

In 2015 100 EFPs were completed - this includes both new and updated plans. At this point in time all plans are treated as “new” plans; this is done to ensure farmers have EFP files that are as complete and up to date as possible. Since July 2012, all EFPs are completed with AgriLogic’s Record+ software and the use of this software allows the program to include new maps showing not only fields, buffers and wetlands, but also details within the farmsteads, such as buildings, well, septic, etc.

In the past year Charlotte Crooks and JoAnn Pineau have participated in several discussions with EFP delivery agents across Canada in an effort to learn more about provincial and national initiatives and practices. They have also participated in educational conferences and workshops to increase their agricultural knowledge and capacity to deliver EFPs.

Charlotte and JoAnn recently sent out letters to all producers whose Environmental Farm Plans are expiring in 2016. If you have not received a letter but feel you are due to be renewed please call the PEIFA office to check the status of your last EFP. EFP’s are good for 5 years and we encourage all farmers to participate in the program. Participation within the program allows farmers to be eligible for the Growing Forward 2 Agriculture Stewardship Program, Farm-land Finance Program and Future Farmer Program.

Further information on the EFP Program can be found by visiting the PEIFA website [www.peifa.ca](http://www.peifa.ca) or by calling the Federation office (902)368-7289.

### **EFP Staff**

**Charlotte Crooks**- [charlottec@peifa.ca](mailto:charlottec@peifa.ca)

**JoAnn Pineau**- [joann@peifa.ca](mailto:joann@peifa.ca)

## Summary of CFA Activities

**2015 Elections** - CFA’s Board and members identified three key policy areas to address throughout the election campaign: business risk management, labour, and trade. These election asks are still relevant and will continue as priority areas for CFA going forward. Since the October 19 election, CFA has been working to form an effective and productive working relationship with the new Liberal government. CFA’s Board of Directors already had an initial discussion during its November meeting with the new Minister of Agriculture and Agri-Food, Lawrence MacAulay.

As with every federal election, CFA again organized a National Agriculture Leaders’ Debate, held September 30 at the Chateau Laurier in Ottawa. Each of the five political parties were represented and responded to questions from farmers across Canada.

**FPT Roundtable**- For the past number of years, CFA has been hosting a roundtable between our members and the federal, provincial and territorial Ministers of Agriculture followed by a reception with the Ministers. This past year, our roundtable was held in conjunction with our summer board meeting and took place in Charlottetown, PEI. The theme: agriculture’s social license and built upon a discussion paper: Building Trust and Transparency. Agriculture’s social license was identified by all as an emerging and critical issue and that a concerted approach that recognized the roles of governments and industry was need in order to move forward. CFA has continued to work with government and industry to move this issue forward by convening a small high-level group comprising representation throughout the value chain to develop a more detailed proposal to then bring to all actors and stakeholders

## Summary of CFA Activities continued ...

**Agriculture Policy Framework** - CFA put together a committee of producers from across Canada and commodities to start exploring issues related to the current agricultural policy framework and to reach recommendations for the next one that will launch in 2018. Working to support this committee are three working groups, tasked with looking at risk management, strategic investments, and market development programs and policies. The process has also provided an opportunity for CFA to update its standing policy and begin discussions with other producer groups as to the draft policy recommendations.

A comprehensive overview of policies and recommendations that illustrate industry's perspective for the next framework will be unveiled at our upcoming AGM. These will provide a solid foundation from which we can work with governments, both provincial and federal, and convene discussions with other agricultural and value chain groups over the coming months.

**Labour**- Agricultural labour continues to represent a major concern across the country. Changes made to the temporary foreign worker program in June 2014 continue to have negative consequences for producers across the country, as well as for the processors that many rely on as markets for their products. CFA raised these concerns to the previous Ministers of Labour and have continued to do so through our pre-budget submission and ongoing work in support of implementing the Canadian Agricultural Human Resource Council's Workforce Action Plan. Throughout 2015, CFA has played a leading role in the development and modernization of the Canadian Agricultural Human Resource Council's Workforce Action Plan, which includes a broad range of recommendations to improve labour market information, career promotion, and the programs producers rely on to address their labour needs.

The main focal points of CFA's work have been addressing the duration caps limiting temporary workers' time in Canada; increasing opportunities for temporary foreign workers to remain in the country and attain their permanent residency; ensuring all interested primary agricultural commodities are included on the national commodities; and ultimately, getting multiple governmental departments to commit to working with industry on a long-term labour strategy as a key priority.

**Sustainability**- The CFA has been active in the past year closely following the development of sustainable sourcing of agricultural products within the Canadian context and in contributing to coalitions and working groups that are moving forward with the issue. This includes being a member of both the Canadian Roundtable for Sustainable Beef and the Canadian Roundtable for Sustainable Crops, attending the Provision Coalition's AGM, and participating in discussions of updating the Environmental Farm Plan to explore the development of it into a program that could provide the environmental assurance for sustainable sourcing.

**Pollinator Health**- CFA has been active in trying to promote a more positive image of agriculture rather than be portrayed as farmers poisoning bees. We're proud supporters of an award which recognizes the positive contributions that producers take to protect and provide pollinator habitat. We've also been trying to raise awareness that 1 out of every three bites of food relies upon pollination and that in Canada, we have more than 1,000 species of pollinators. The CFA has also been closely following the scientific debate and regulatory interaction between the impact of neonics on honeybees but also all health impacts that have been shown to play a role including availability of pollen sources, habitat, pests and diseases and management.

**Food Safety**- The CFA has been closely following regulatory and policy developments with CFIA and has participated in opportunities to engage with CFIA as it develops frameworks, guidance documents and draft regulatory language. We're a member of the Canadian Supply Chain Food Safety Coalition and have used this platform to coordinate our submissions amongst industry stakeholders.

We were very pleased to see CFIA make draft regulatory language publicly available before publishing it in Gazette Part I as this represents an unprecedented move towards further transparency. There are many new concepts which have been introduced to modernize the current regulations such as using incorporation by reference and moving towards an outcomes-based approach rather than one that is

## Summary of CFA Activities continued ...

**International Trade** - 2015 saw the completion of the Trans-Pacific Partnership negotiations. From CFA's perspective, a key outcome for all trade negotiations is to find a balance between exporter interests and sensitive sectors and the TPP was no different. Canada was able to negotiate market access commitments from Japan, one of our key markets. On the other hand, Canada had to concede additional market access for its supply managed sectors, ranging from 2-3 % for the Canadian poultry, egg and dairy sectors. CFA will be pushing the government to compensate these sectors for any negative impact the TPP agreement may have.

With last year's Comprehensive Economic and Trade Agreement with the European Union and now the TPP agreement, Canada has trade deals in place with the two largest trading blocks in the world. It's now important for government and industry stakeholders to work together in developing an export strategy that will ensure Canadian producers are able to take advantage of access to new markets.

**Research Policy** - This past year saw the adoption of a dedicated research policy for CFA. CFA's standing policy had addressed research in a number of areas, but had not offered a comprehensive policy that covered off all of agricultural research. Developed through a special issue committee, this policy was adopted by our board in April and has already proved useful in the development of the Agriculture Institute of Canada's draft research policy. Furthermore, it has been intrinsic in the APF Committee's exploration of agriculture research in GF2 and the development of a comprehensive set of recommendations for the next APF.

**Farmland Access**- At our last board meeting in November, CFA approved the terms of reference for a new special issues committee tasked with looking into the range of issues associated with farmland access and ownership. With the continued rise of farmland values and ongoing interest from new, non-farm interests across Canada, the committee's mandate is to share information, identify issues and their associated best practices, and to develop key recommendations as to what kind of information should be collected in this area.

In addition, if investors are causing challenges for farmers trying to procure new land, the committee will explore how we can work with prospective investors to encourage investment approaches that meet the needs of industry and broader societal objectives. Initial discussions have already been held in 2016, with Norm Hall from APAS as Chair, and will continue with the committee's terms of reference wrapping up at the October 2016 board meeting.

**Communications** - One of the larger projects this year was *Farm to Table*, which CFA's Board of Directors approved the purchase of earlier in 2015. Previously a joint endeavor with the *Globe and Mail*, the CFA purchased the digital platform and brand. Work has been done to further populate [www.farmtotablemagazine.ca](http://www.farmtotablemagazine.ca), promote it and develop a social media presence for the platform. This site will be used as another avenue to supply informative, transparent information about the work being done by Canadian producers and value chain through interesting articles. Heading into the New Year, CFA will be developing a communications strategy, in line with the new CFA strategic framework.

## Resolutions Process

### Guidelines for the Resolution Process

All Resolutions must be relevant to agriculture on Prince Edward Island

1. Resolutions will be accepted by the Resolutions Committee prior to the Annual General Meeting but will be accepted from the floor.
2. Resolutions should be worded to include:
  - A clear background statement explaining the reasoning for the resolution
  - A motion stating in clear and concise terms the expected or desired outcomes
3. All resolutions presented 48 hours prior to the AGM will be included in the Annual Report booklet
4. Late resolutions will be accepted but may not be included in the booklet

### Resolutions Committee

The Federation's resolutions committee shall consist of one representative each from:

1. the Executive Committee,
2. the commodity board/agricultural organizations, and
3. the county directors

### Resolutions Process

Every Annual Meeting will have a period of time devoted to the passing of new resolutions

1. The Resolutions will be presented by the Chair of the Resolutions Committee who will read the Resolutions and will move the adoption of the Resolution
2. The Chair will ask for a member to second the nomination. If the resolution fails to receive a second nomination it dies on the floor
3. If the Resolution received a second nomination, then the Chair can ask for opportunities to speak to Resolution. The Resolution can also be amended with the consent of the mover and seconder.
4. After a discussion on the resolution the Chair can call for the question. The Resolution is passed by being approved by a majority of the eligible voting members present.





## 2016 Resolutions

### Resolution # 1

#### **CONTINUATION OF POLICY**

**Whereas** Document 1 lists all resolutions from the previous Annual General Meeting of the PEI Federation of Agriculture (2014) and

**Whereas** Document 1 also outlines all action taken to date toward resolution of the identified issues and shows where further action is required,

**Therefore Be It Resolved** that the PEI Federation of Agriculture continue its efforts to bring the issues which require further attention and activity as outlined in Document 1, to the attention of those bodies or interests concerned to ensure the issues are addressed.

#### **Document 1. Confederation Centre of the Arts, Charlottetown PEI January 30, 2015**

Resolution 1	<b>Land Swap</b>	Meetings with DM and officials with Agriculture and Forestry. No movement yet but starting to break down
Resolution 2	<b>Geolink</b>	Discussions with officials, identified in Carver Report. Verbal commitment to implement. Logistics are being
Resolution 3	<b>High Capacity Wells</b>	Many meetings with top government officials, proposals presented to Water Act Committee. Lobbying continues.
Resolution 4	<b>Off-Highway Vehicles</b>	Funding secured to address, "ATV" committee formed, meetings underway.
Resolution 5	<b>Trespass Act</b>	No movement as yet.

## **Resolution # 2**

### **Municipal Amalgamation and Annexation**

#### **The Issue:**

The Provincial Government has stated it is pursuing municipalization province wide. PEI agricultural landowners are uncertain municipalization is in the best interest of agriculture.

Concerns include, but are not limited to:

Increased rates of taxation

Right to farm being determined at a municipal level

Limitations with regard to change of purpose, if land is zoned agricultural

**Whereas** the Prince Edward Island Provincial Government has initiated a province wide Amalgamation, Incorporation and Annexation process

**Whereas** a large percentage of PEI agricultural land sits outside municipalities

**Whereas** the long term interests of agricultural land owners is uncertain with regard to right to farm, taxation and repurposing of land

**Whereas** there is uncertainty as to authority municipalities may have with regard to right to farm

**Whereas** the Prince Edward Island Provincial Government has communicated full municipalization of the Island is certain

**Therefore be it resolved** the PEIFA lobby to establish a Land Resource Working Group comprised of:

Deputy Ministers of relative Departments:

Agriculture and Fisheries

Communities, Land and Environment

Transportation, Infrastructure and Energy, and

Representatives from:

PEIFA

Woodlot Owners, and

The Watershed Alliance

**TO ADDRESS:**

1. Long term security of farm land and protection of right to farm
2. A clear and transparent process for change (i.e. to change from agriculture use to another use such as residential, industrial, commercial)
3. Protection from increased taxation. Agricultural land utilizes very few services and should be taxed accordingly.
4. The most effective level of governance of land zoning. Should control and taxation of agriculture land reside with the province or municipalities? Which is the most cost efficient and consistent?

**Resolution # 3****Municipal Amalgamation and Annexation**

*Whereas* most agriculture production is located in unincorporated communities

*Whereas* the agriculture community is paying a significant amount of taxes today and is facing increasing costs on its operations every year.

*Whereas* municipal council bylaws may restrict the freedom to conduct farm operations.

*Therefore Be It Resolved* that the PEI Federation of Agriculture lobby the Provincial Government to:

Refrain from forcing rural communities to join incorporated municipalities.

Recognize the long standing contribution unincorporated rural areas of the province have provided to strengthen PEI's economy.

**Resolution # 4****Class 3A Heavy Truck Farm Licence**

**Whereas** the agriculture community is experiencing a shortage of skilled and licenced Class 3A truck drivers

**Whereas** the Graduated License program has further hindered the farming community's ability to license Class 3A young drivers.

**Whereas** Class 3A truck drivers are an integral aspect of many operations in getting product to and from the field.

*Therefore Be It Resolved* that the PEI Federation of Agriculture lobby the Provincial Government to:

Amend the Highway Traffic Act to create a 3A Farm Class license that is restricted to on Island driving in order to address the continued shortage of licenced drivers.

## **Resolution # 5**

### **Individual Annual Farm Plans**

#### **The Issue:**

There is a need for the farming community to take a more proactive approach in addressing environmental concerns such as rising nitrate levels, soil erosion and others and how to best resolve these issues on an individual farm basis. This is opposed to the historical blanket prescriptive legislation and regulation that has hindered farm operations while not achieving the desirable outcome results.

**Whereas** farmers recognize the need to take a responsible and proactive approach to environmental sustainability

**Whereas** proposed provincial legislation related to Water has prompted questions about how the farming community handles its responsibilities as environmental stewards

**Whereas** every farm has unique environmental challenges and opportunities

**Whereas** prescriptive one-sized fits all legislative or regulatory solutions do not always achieve effective results (Example: Buffer Zone Legislation)

**Whereas** the Environmental Farm Program is a model of how to assess environmental concerns on an individual farm basis

**Whereas** provinces such as Quebec and Manitoba have initiated an individual farm plan approach to their environmental concerns and enforcement

**Therefore be it resolved** that the PEI Federation of Agriculture lead a discussion with relative stakeholders including farmers, government, agri retailers, professional agrologists, certified crop advisors, and watershed groups on the concept of using individual annual farm plans to address:

- Nutrient management
- Buffer zones
- Crop rotation
- Soil management
- Island Regulatory Advisory and Appeals Commission Land Protection regulations
- And other factors related to farm operations and their potential effect on the surrounding environment

**Resolution # 6****Financial payment protection for fruit and vegetable sellers**

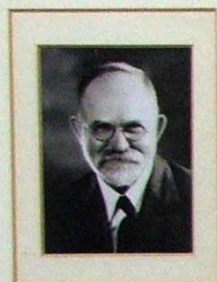
**WHEREAS** the lack of financial payment protection for fruit and vegetable sellers relating to insolvent Canadian buyers results in disproportionate financial risk for produce sellers in Canada; and

**WHEREAS** the failure of the Canadian Government to provide insolvency protection for US produce sellers into Canada has resulted in the US removing the longstanding preferential access for Canadian produce sellers to the protections under the US Perishable Agricultural Commodities Act (PACA); and

**THEREFORE BE IT RESOLVED** that the P.E.I. Federation of Agriculture advocate for the creation of a limited (limited specifically to produce accounts receivable, and any cash and inventory from the sale of the produce) deemed trust to provide financial protection for produce sellers in Canada in a manner that is equivalent to the US PACA protections for produce sales to US buyers, and

**BE IT FURTHER RESOLVED** that this protection, once in place be extended to US sellers to permit reinstatement of the preferred access to PACA protection for Canadian produce sellers into the US and the elimination of this unnecessary trade irritant.

## Past-Presidents of the PEIFA



CAPT. J.J. READ  
1941-43



J.J. TRAINOR  
1944-46



ALLISON PROFITT  
1947



LOUIS O'CONNOR  
1948-50



CHARLES YEO  
1951-52



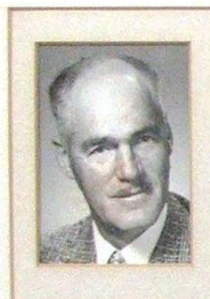
ROLAND MacDONALD  
1953-54



LLOYD MARTIN  
1955



ARCHIE JOHNSTONE  
1956



COLIN WAUGH  
1957-58



KEN MacLEAN  
1959-60



GEORGE MacDONALD  
1961-62



SMITH MacFARLANE  
1963-64



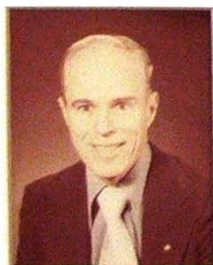
JOHN RODD  
1965-66



DAN MacPHERSON  
1967-68



ELMER WAUGH  
1969



KEITH KENNEDY  
1970



WILBERT MacKENZIE  
1971



WALLACE WOOD  
1972-73



ANCO HAMMING  
1974-75



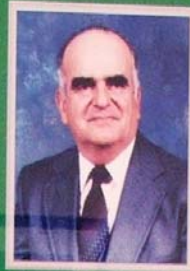
PROWSE CHAPPELL  
1976-77



IRA LEWIS  
1978



RAY BROWN  
1980-81



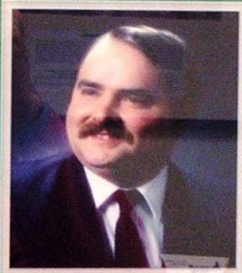
ELDRED SIMMONS  
1982-83



HAROLD GODFREY  
1984-85



GERRIT VISSER  
1986-87



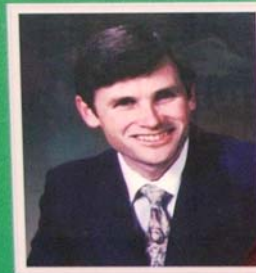
GARY HEANEY  
1988-89



JOHN J. MACDONALD  
1990-91



GORDON SOBEY  
1992-93



PHILIP BROWN  
1993-94



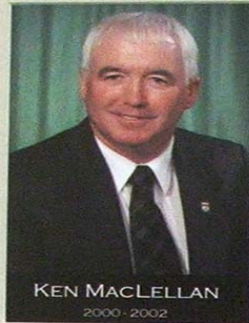
BARRY CUDMORE  
1995



EDISON HEANEY  
1996-97



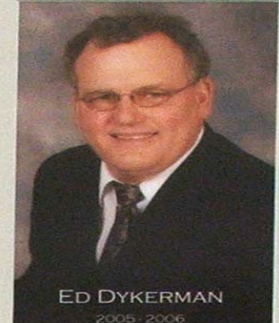
METTE CHING  
1998-99



KEN MACLELLAN  
2000 - 2002



ROBERT MACDONALD  
2003 - 2004



ED DYKERMAN  
2005 - 2006



ERNIE MUTCH  
2009 - 2010



BERTHA CAMPBELL  
2011 - 2012



Alvin Keenan  
2013- 2014



Non-consolidated Financial Statements of

**PRINCE EDWARD ISLAND  
FEDERATION OF AGRICULTURE**

Year ended November 30, 2015



Tel: 902 892 5365  
Fax: 902 892 0383  
www.bdo.ca

BDO Canada LLP  
155 Belvedere Avenue, Suite 200  
PO Box 2158  
Charlottetown PE C1A 8B9 Canada

## AUDITOR'S REPORT

To the Members of Prince Edward Island Federation of Agriculture

We have audited the accompanying non-consolidated financial statements of Prince Edward Island Federation of Agriculture which comprise the non-consolidated statement of financial position as at November 30, 2015 and the non-consolidated statements of operations, changes in net assets and cash flows for the year then ended, and a summary of significant accounting policies and other explanatory information.

### Management's Responsibility for the Non-consolidated Financial Statements

Management is responsible for the preparation and fair presentation of these non-consolidated financial statements in accordance with Canadian accounting standards for not-for-profit organizations, and for such internal control as management determines is necessary to enable the preparation of non-consolidated financial statements that are free from material misstatement, whether due to fraud or error.

### Auditor's Responsibility

Our responsibility is to express an opinion on these non-consolidated financial statements based on our audit. We conducted our audit in accordance with Canadian generally accepted auditing standards. Those standards require that we comply with ethical requirements and plan and perform the audit to obtain reasonable assurance about whether the non-consolidated financial statements are free from material misstatement.

An audit involves performing procedures to obtain audit evidence about the amounts and disclosures in the non-consolidated financial statements. The procedures selected depend on the auditor's judgment, including the assessment of the risks of material misstatement of the non-consolidated financial statements, whether due to fraud or error. In making those risk assessments, the auditor considers the internal control relevant to the entity's preparation and fair presentation of the non-consolidated financial statements in order to design audit procedures that are appropriate in the circumstances, but not for the purpose of expressing an opinion on the effectiveness of the entity's internal control. An audit also includes evaluating the appropriateness of accounting policies used and the reasonableness of accounting estimates made by management, as well as evaluating the overall presentation of the non-consolidated financial statements.



We believe that the audit evidence we have obtained is sufficient and appropriate to provide a basis for our audit opinion.

#### Opinion

In our opinion, the non-consolidated financial statements present fairly, in all material respects, the financial position of Prince Edward Island Federation of Agriculture as at November 30, 2015 and the results of its operations and its cash flows for the year then ended in accordance with Canadian accounting standards for not-for-profit organizations.

Chartered Professional Accountants

*BDO Canada LLP*

Charlottetown, Prince Edward Island  
January 25, 2016

## PRINCE EDWARD ISLAND FEDERATION OF AGRICULTURE

### Non-consolidated Statement of Financial Position

November 30, 2015, with comparative figures for 2014

	Advance Payment Program	Federation	2015	2014
<b>Assets</b>				
<b>Current assets:</b>				
Cash	\$ 1,133,475	\$ 111,244	\$ 1,244,719	\$ 1,509,594
Restricted cash (note 2)	-	104,952	104,952	103,823
Accounts receivable	248,226	47,349	295,575	348,006
Due between programs	(20,000)	20,000	-	-
Prepaid expenses	-	3,333	3,333	3,333
Advance payments to producers	44,292,425	-	44,292,425	43,816,083
	\$ 45,654,126	\$ 286,878	\$ 45,941,004	\$ 45,780,839

### Liabilities and Net Assets

<b>Current liabilities:</b>				
Bank indebtedness (note 3)	\$ 44,304,103	\$ -	\$ 44,304,103	\$ 43,828,519
Accounts payable and accrued liabilities	84,006	4,952	88,958	110,975
Payable to projects (note 4)	-	26,335	26,335	22,866
Deferred revenue	16,525	1,900	18,425	16,826
Holdbacks payable to producers	1,021,716	-	1,021,716	1,504,533
	45,426,350	33,187	45,459,537	45,483,719
<b>Net assets:</b>				
Internally restricted (note 5)	-	100,000	100,000	100,000
Externally restricted - APP	227,776	-	227,776	38,140
Unrestricted	-	153,691	153,691	158,980
	227,776	253,691	481,467	297,120

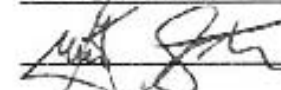
Commitments (note 6)

	\$ 45,654,126	\$ 286,878	\$ 45,941,004	\$ 45,780,839
--	---------------	------------	---------------	---------------

The accompanying notes are an integral part of these non-consolidated financial statements.

On Behalf of the Board:

 \_\_\_\_\_ Director

 \_\_\_\_\_ Director



## PRINCE EDWARD ISLAND FEDERATION OF AGRICULTURE

### Non-consolidated Statement of Operations

Year ended November 30, 2015, with comparative figures for 2014

	2015	2014
<b>Revenue:</b>		
Membership dues	\$ 138,857	\$ 141,038
Department of Agriculture funding	23,775	32,700
Corporate sponsorships	36,000	37,900
Commodity membership fees	3,700	4,325
Interest and insurance commissions	2,119	5,458
Expenses recovery (note 7)	28,958	62,781
	<b>233,409</b>	<b>284,202</b>
<b>Expenses:</b>		
Advertising	4,956	2,881
Bad debt	300	-
Bank charges and interest	97	3,537
Communications	12,061	3,392
Director per diems	8,230	7,076
Equipment and computers	1,404	922
Equipment rental and repair	618	740
Insurance	1,027	1,027
Meetings	32,751	35,082
Memberships and subscriptions	8,858	7,915
Office supplies and printing	1,668	2,276
Photocopying	2,429	2,780
Postage and document registrations	6,005	7,320
President's stipend	5,000	5,000
Professional fees	4,192	10,473
Rent	29,628	29,501
Scholarship program	2,000	-
Special projects - Farmer Assistance Program	12,500	17,500
Telecommunications	2,199	2,358
Travel	3,768	11,738
Wages and employee benefits	99,007	116,963
	<b>238,698</b>	<b>268,481</b>
Excess of revenue over expenses (expenses over revenue) before the undernoted	(5,289)	15,721
Advance Payment Program excess of revenue over expenses (page 13)	189,636	18,664
Excess of revenue over expenses	<b>\$ 184,347</b>	<b>\$ 34,385</b>

The accompanying notes are an integral part of these non-consolidated financial statements.

## PRINCE EDWARD ISLAND FEDERATION OF AGRICULTURE

### Non-consolidated Statement of Changes in Net Assets

Year ended November 30, 2015, with comparative figures for 2014

	Advance Payment Program	Internally restricted	Unrestricted	2015	2014
Net assets, beginning of year	\$ 38,140	\$ 100,000	\$ 158,980	\$ 297,120	\$ 262,735
Excess of revenue over expenses	189,636	-	(5,289)	184,347	34,385
Net assets, end of year	\$ 227,776	\$ 100,000	\$ 153,691	\$ 481,467	\$ 297,120

The accompanying notes are an integral part of these non-consolidated financial statements.

## PRINCE EDWARD ISLAND FEDERATION OF AGRICULTURE

### Non-consolidated Statement of Cash Flows

Year ended November 30, 2015, with comparative figures for 2014

	2015	2014
<b>Cash flows from operations</b>		
Cash receipts from members and funding	\$ 473,095	\$ 379,447
Cash paid to employees and suppliers	(418,929)	(460,394)
Interest received	1,136,086	1,445,491
Interest paid	(970,423)	(1,118,937)
	219,829	245,607
<b>Cash flows from financing and investing activities</b>		
Decrease (increase) in advance payments to producers	(476,342)	4,986,872
Increase (decrease) in bank indebtedness	475,584	(4,987,899)
Decrease in holdbacks payable	(482,817)	(309,436)
	(483,575)	(310,463)
Net decrease in cash	(263,746)	(64,856)
Cash, beginning of year	1,613,417	1,678,273
Cash, end of year	\$ 1,349,671	\$ 1,613,417
<b>Represented by:</b>		
Cash	1,244,719	1,509,594
Term deposits	104,952	103,823
	\$ 1,349,671	\$ 1,613,417

The accompanying notes are an integral part of these non-consolidated financial statements.

## PRINCE EDWARD ISLAND FEDERATION OF AGRICULTURE

### Notes to Non-consolidated Financial Statements

Year ended November 30, 2015

---

#### 1. Significant Accounting Policies:

##### (a) Nature and Purpose of Organization:

The Federation is a not-for-profit association incorporated without share capital under the laws of Prince Edward Island. The association is exempt from income taxes provided certain requirements of the Income Tax Act are met.

The Federation is dedicated to promoting the interests of Prince Edward Island's agriculture and agri-food producers, including farm families and to ensuring the continued development of a viable and vibrant agriculture industry on Prince Edward Island.

These non-consolidated financial statements do not include the assets, liabilities, revenues or expenses of certain projects with which the Federation is involved. However, the Federation is contingently liable for any operating deficits which may occur in the Farm Safety Project and Environmental Farm Planning Program.

These non-consolidated financial statements include the accounts of the Advance Payment Program. The Federation administers the Advance Payment Program on Prince Edward Island for Agriculture and Agri-Food Canada. This program is a lending program that assists qualifying agriculture and agri-food producers with short-term working capital loans.

##### (b) Basis of Accounting:

These non-consolidated financial statements have been prepared using Canadian accounting standards for not-for-profit organizations.

These non-consolidated financial statements have not been consolidated with some of the Federation's related projects. These projects are self-sustaining and do not pertain to the core operations of the Federation.

Financial summaries of the non-consolidated projects are included in note 8.



## PRINCE EDWARD ISLAND FEDERATION OF AGRICULTURE

### Notes to Non-consolidated Financial Statements

Year ended November 30, 2015

---

#### 1. Significant Accounting Policies (continued):

##### (c) Revenue Recognition:

The Federation follows the deferral method of accounting for contributions. Restricted contributions are recognized as revenue in the year in which the related expenses are incurred. Unrestricted contributions are recognized as revenue when received or receivable if the amount to be received can be reasonably estimated and collection is reasonably assured.

Membership dues are recognized as revenue as collected. Security fees for the Advance Payment Program are recognized as revenue as collected. Administration fees for the Advance Payment Program are recognized as revenue in the year collected, with the exception of a portion which is deferred until the advance is repaid.

##### (d) Financial Instruments:

Financial instruments are recorded at fair value when acquired or issued. In addition, all Guaranteed Investment Certificates have been designated to be in the fair value category, with gains and losses reported in operations. All other financial instruments are reported at cost or amortized cost less impairment, if applicable. Financial assets are tested for impairment when changes in circumstances indicate the asset could be impaired.

##### (e) Use of Estimates:

The preparation of non-consolidated financial statements in accordance with Canadian accounting standards for not-for-profit organizations requires management to make estimates and assumptions that affect the reported amounts of assets and liabilities at the date of the non-consolidated financial statements and the reported amounts of revenues and expenses during the reporting period. Actual results could differ from management's best estimates as additional information becomes available in the future.

#### 2. Restricted Cash:

Restricted cash consists of monies on deposit, held in a high-interest savings account. These investments are restricted for the purposes of funding internally restricted net assets as explained in note 5.

## PRINCE EDWARD ISLAND FEDERATION OF AGRICULTURE

Notes to Non-consolidated Financial Statements

Year ended November 30, 2015

---

### 3. Bank Indebtedness:

	2015	2014
Advance Payment Program loans:		
Bank of Nova Scotia, prime less 0.5%	\$ 44,304,103	\$ 43,828,519

---

Advance payments to producers are issued under the provisions of the Agricultural Marketing Programs Act (AMPA).

Advance Payment Program loans are secured by a guarantee of the Minister of Agriculture of Canada. For the 2015 program, the minimum federal guarantee was 100% (2014 - 99%).

Bank indebtedness also includes a bank overdraft of \$ Nil. (2014 - \$ Nil.) which is available to a maximum of \$ 40,000. and bears interest at prime plus 1%. This overdraft is secured by a general assignment of book debts.

## PRINCE EDWARD ISLAND FEDERATION OF AGRICULTURE

Notes to Non-consolidated Financial Statements

Year ended November 30, 2015

#### 4. Payable to Projects:

Payable to projects represents funds held in the Federation's bank account on behalf of certain other projects. These projects will continue to operate in the future with their associated funds being held in the Federation's bank account. The amounts pertaining to each project are as follows:

	Balance 2014	Receipts	Disbursements	Balance 2015
Sprayer Calibration	\$ 30,857	\$ 18,350	\$ 14,285	\$ 34,923
2016 Calendar	-	-	2,740	(2,740)
Speaker Bureau	-	2,500	7,748	(5,248)
Bio-Security project	-	-	600	(600)
<b>Total of ongoing projects</b>	<b>30,857</b>	<b>20,850</b>	<b>25,373</b>	<b>26,335</b>
2015 Calendar	(6,991)	4,000	(2,991)	-
Governance Training	-	6,763	6,763	-
Scholarship Fund	(1,000)	-	(1,000)	-
<b>Total of projects closed in 2015</b>	<b>(7,991)</b>	<b>10,763</b>	<b>2,772</b>	<b>-</b>
	<b>\$ 22,866</b>	<b>\$ 31,613</b>	<b>\$ 28,145</b>	<b>\$ 26,335</b>

2015 Calendar, Governance Training and Scholarship Fund were completed during the year. Any funding remaining after completion of the project is included in the expenses recovery on the statement of operations.

During the 2015 year, \$ 8,500. of sponsorship revenue pledged for the Sprayer Calibration project were not honoured by the sponsors. Therefore, receipts for the Sprayer Calibration project above are presented net of the unfulfilled sponsorships.

#### 5. Internally Restricted Net Assets:

The Federation has restricted the use of \$ 100,000. (2014 - \$ 100,000.) of net assets. The funds are restricted for purposes of funding the completion of current and future Federation initiatives related to a variety of farm commodity groups. These internally restricted amounts are not available for general use without approval of the Board of Directors. Internally restricted funds have been segregated from operations and held in a term deposit as disclosed in note 2.

## PRINCE EDWARD ISLAND FEDERATION OF AGRICULTURE

Notes to Non-consolidated Financial Statements

Year ended November 30, 2015

---

### 6. Commitments:

The Federation has an operating lease for a photocopier with a payment of \$ 735. per quarter under a lease expiring September 2019.

The minimum annual lease payments with respect to these commitments for the next four years are as follows:

---

2016	\$	2,940
2017		2,940
2018		2,940
2019		2,450

---

### 7. Expenses Recovery:

Included in expenses recovery are amounts received by the Federation for recovery of rent, supplies, HST and from special projects, such as the Environmental Farm Planning Program and the Farm Safety Project. These amounts are to reimburse the Federation for expenses paid on behalf of these special projects.

## PRINCE EDWARD ISLAND FEDERATION OF AGRICULTURE

### Notes to Non-consolidated Financial Statements

Year ended November 30, 2015

#### 8. Related Projects:

##### (a) Environmental Farm Planning Program

The Federation is responsible for the administration of the Environmental Farm Planning Program which is responsible for helping P.E.I. farmers develop an approach to sustainable agriculture production.

The Environmental Farm Planning Program has not been consolidated in the Federation's non-consolidated financial statements. As of November 30, 2015, the Environmental Farm Planning Program reported amounts payable to the Federation of \$ 21,407. (2014 - \$ 25,330.). Financial statements of the Program are available upon request. A financial summary of the non-consolidated entity as at March 31, 2015 and 2014 and for the years then ended is as follows:

	2015	2014
<b>Financial position:</b>		
Total assets	\$ 38,093	\$ 48,496
Total liabilities	38,093	48,496
<b>Net assets</b>	<b>\$ -</b>	<b>\$ -</b>
<b>Results of operations:</b>		
<b>Revenue:</b>		
Grant funding	\$ 85,000	\$ 100,000
Contract recovery	10,500	-
Other	1,000	1,000
	<u>96,500</u>	<u>101,000</u>
<b>Expenses:</b>		
Administration	30,802	24,389
Workshops/evaluation and monitoring	6,401	7,348
Staff	73,665	68,620
	<u>110,868</u>	<u>100,357</u>
<b>Excess of revenue over expenses (expenses over revenue)</b>	<b>\$ (14,368)</b>	<b>\$ 643</b>

## PRINCE EDWARD ISLAND FEDERATION OF AGRICULTURE

### Notes to Non-consolidated Financial Statements

Year ended November 30, 2015

#### 8. Related Projects (continued):

##### (b) Farm Safety Project

The Federation is responsible for the administration of the Farm Safety Project which is aimed at increasing awareness of farm related injuries and their prevention.

The Farm Safety Project has not been consolidated in the Federation's non-consolidated financial statements. As of November 30, 2015, the Farm Safety Project reported amounts receivable from the Federation of \$ 933. (2014 - \$ Nil.). Financial statements of the Project are available upon request. A financial summary of the non-consolidated entity as at March 31, 2015 and 2014 and for the years then ended is as follows:

	2015	2014
<b>Financial position:</b>		
Total assets	\$ 15,364	\$ 17,689
Total liabilities	18,180	120
<b>Net assets (deficit)</b>	<b>\$ (2,816)</b>	<b>\$ 17,569</b>
<b>Results of operations:</b>		
<b>Revenue:</b>		
Grants	\$ 25,500	\$ 32,500
Other	764	2,728
	26,264	35,228
<b>Expenses:</b>		
Administration	18,808	14,112
Staff	27,840	27,078
	46,648	41,190
<b>Excess of expenses over revenue</b>	<b>\$ (20,384)</b>	<b>\$ (5,962)</b>

#### 9. Default Loan Payments:

The Federation has received \$ 812,496. (2014 - \$ 4,373,891.) in default loan transfers from the Federal Government to settle amounts owing on default loans relating to the Advance Payment Program.

## PRINCE EDWARD ISLAND FEDERATION OF AGRICULTURE

Notes to Non-consolidated Financial Statements

Year ended November 30, 2015

---

### 10. Financial Instrument Risks:

#### Interest Rate Risk

Interest rate risk is the risk that the fair value or future cash flows of a financial instrument will fluctuate because of changes in market interest rates. The Federation is exposed to interest rate risk arising from bank indebtedness of \$ 44,304,103. (2014 - \$ 43,828,519.) which bears interest at a variable rate. There have been no changes in this risk from the prior year.

#### Credit Risk

The Federation is exposed to normal credit risk resulting from the possibility that a counterparty to a financial instrument defaults on their financial obligations; if there is a concentration of transactions carried out with the same counterparty; or of financial obligations which have similar economic characteristics such that they could be similarly affected by changes in economic conditions. The Federation's financial instruments that are exposed to concentrations of credit risk relate primarily to advance payments to producers of \$ 44,292,425. (2014 - \$ 43,816,083.) which are receivable from entities operating in the agriculture industry on Prince Edward Island. The Federation mitigates against this credit risk through securing all loans by a guarantee of the Minister of Agriculture of Canada equal to 100% (2014 - 99%) of the outstanding balance. The Federation has effectively reduced its risk from that of the prior year.

## PRINCE EDWARD ISLAND FEDERATION OF AGRICULTURE

### Statement of Operations - Advance Payment Program

Year ended November 30, 2015, with comparative figures for 2014

	2015	2014
<b>Revenue:</b>		
Administration fees	\$ 149,876	\$ 148,826
Interest recovered from producers	678,093	608,902
Interest subsidy - Agriculture and Agri-Food Canada	479,145	519,029
Interest earned on account	16,777	20,071
	1,323,891	1,296,828
<b>Expenses:</b>		
Advertising	212	856
Computer repairs and setup	463	632
Director per diems	5,000	3,500
Document registrations	2,868	4,939
Insurance	1,000	1,000
Interest on APP loans	959,333	1,099,842
Legal and accounting	5,784	5,526
Meetings and travel	1,320	2,819
Office supplies and printing	5,823	5,546
Postage	1,739	2,462
Rent	8,200	8,200
Telecommunications	4,701	4,504
Wages and employee benefits	137,812	138,338
	1,134,255	1,278,164
<b>Excess of revenue over expenses</b>	<b>\$ 189,636</b>	<b>\$ 18,664</b>



## 2016 Budget

	2016 Budget	2015 Actual	2015 Budget
<b>Revenue</b>			
Farm Registrations	136000	138857	140000
Commodity Organization Dues	3600	3700	4400
Corporate Sponsorships	32000	36000	35000
Project Funding	70000	23775	40000
Interest Income	1000	2119	1000
Total recovered expenses	48000	28958	60000
<b>Total Revenue</b>	<b>\$290,600.00</b>	<b>\$233,409.00</b>	<b>\$280,400.00</b>
<b>Expenses</b>			
Total Wages and Salaries	120000	99007	120000
Executive and Board Honorariums	15000	13230	14000
Travel	8000	3768	12000
Total Meeting and Event Expenses	40000	32751	35000
Farmer Counselling Program	12500	12500	12500
Rent	30000	29628	30000
Advertising	4000	4956	2000
Communications	5000	12061	5000
Phone/Fax/Internet	6000	2199	2500
Photocopier	3000	2429	3000
Computer/Internet Repair and Setup	1000	618	1000
Office Equipment Purchases	1500	1404	1500
Accounting and Legal	10000	4192	8000
Membership Dues and Registrations	7500	8858	7500
Postage & Document Registrations	7000	6005	7500
Office Supplies	6000	1668	2500
Insurance	2000	1027	1500
Interest and Bank Charges	400	97	100
Miscellaneous	100	2300	100
<b>Total Expenses</b>	<b>279000</b>	<b>238698</b>	<b>265700</b>
<b>NET INCOME</b>	<b>\$11,600.00</b>	<b>-\$5,289.00</b>	<b>\$14,700.00</b>

## Nominations Process

### **Duties:**

The Nominating Committee shall make recommendations to the Annual General Meeting of the PEI Federation of Agriculture for the following positions:

#### **Executive Committee positions**

1. President
2. 1<sup>st</sup> Vice President
3. 2<sup>nd</sup> Vice President
4. Member at Large

The Past President and Young Farmer position are appointed.

#### **County Directors**

Two representatives from each county will be elected at the Annual Meeting for a two year term

### **Nominating Committee**

The Federation's nominating committee shall consist of one representative each from:

1. The Executive Committee
2. The commodity board/agricultural organizations
3. The county directors

### **Procedures**

The Nominations Committee shall accept nominations for the positions of Executive Committee up until forty-eight (48) hours prior to the annual meeting.

The Nominations Committee will present a slate of officers and directors at the Annual Meeting. A Nominations Report will be presented at the Annual Meeting and nominations can be made from the floor during the call. If no further nominations come from the floor the Chair of the Nominations Committee will move the adoption of the slate of officers and directors and they must be seconded and approved.

Should nominations come from the floor for County Directors, than a voting process is initiated.

### **Voting Process**

The voting process is initiated at the end of the third call for nominations.

The Nominations Committee Chair calls for 2 scrutineers to oversee the counting process.

Ballots are passed out to eligible members. There will be one vote per eligible membership.

Members are asked to select two names from the list of nominations.

The ballots are counted and the two names receiving the highest number of votes will be elected.

## Member Reports



### Prince Edward Island Potato Board Report for the PEI Federation of Agriculture AGM

January 2016

The mission of the PEI Potato Board is to represent PEI potato growers, working together to ensure long-term profitability and sustainability through marketing, advocacy, negotiations, and activities to support quality potato production. This mission, along with strategic objectives set in the Board's strategic plan, guides the priorities and actions of the Board over the past year.

2015 was a year of both successes and challenges for the Prince Edward Island potato industry. The 2015 crop proved to be an average sized crop, with yields down slightly from an above average crop in 2014. This was due in large part to a significant stretch of dry weather in most of the province during the summer, which limited the growth potential of many varieties. Nonetheless, Island growers averaged 279 cwt/acre from 89,000 harvested acres, resulting in a total crop of 24.9 million cwt. While Prince Edward Island has a somewhat smaller crop than last year, other potato producing areas including New Brunswick, Quebec and Maine all have an excess of potatoes due to record setting yields. As a result, tablestock prices have so far similar to those in the previous marketing season. Movement in Canada has been slower than normal, but movement to the United States and export markets has increased.

In an effort to position PEI Potatoes as a recognized and sought after brand, the industry was proud to unveil a new logo and new packaging design in 2015 after a process of market review, design and testing. New packaging designs are being used by a number of packers and the Board has received very positive comments on the new packaging from national retailers. In addition, the Board is promoting the use of the new PEI Potatoes logo on private packaging employed by individual packers, with a number of packers already incorporating this new brand mark. Over time, it is expected that these updated designs and branding will make Prince Edward Island Potatoes more visible in the marketplace and lead to increased demand and sales, and thereby also increase the consumption of fresh PEI Potatoes.

The Board continues to be active on social media, with over 9,800 likes on Facebook and more than 4,800 followers on Twitter. A new "Where To Buy" initiative launched on Facebook in 2015 shows promise for notifying consumers on where they can find PEI Potatoes for sale near them. The industry continues to sponsor a number of local festivals and events.

A major success this summer was the first PEI Potato Social, held in August at Monaghan Farms in Norboro. Based on an idea from a potato grower, this was an opportunity to thank the Island public for their support over the past year as well as engage Islanders in conversation about potato farming and where their potatoes come from. More than 1,300 people attended the Social, which included a free barbeque lunch, baked potatoes, a fry wagon, games for kids, and live entertainment. A sincere "thank you" to a large team of volunteers who ensured that everything went off without a hitch, resulting in a very successful event.

Unfortunately, a major issue the industry faced in 2015 was the continuing fallout from potato tampering first identified in the fall of 2014. Additional cases were identified in 2015 from the 2014 crop year, and the Board moved quickly to respond to this issue. In partnership with the provincial government, a program was developed to assist growers and packers with purchasing foreign material detection equipment following a review of available technology by a consultant. Following this, the federal government subsequently announced further \$1.5 million, combined with a further \$500 thousand from the provincial government, toward the purchase of equipment as well as the cost of integrating equipment into grading lines as well as improving security on farms. The PEI Potato Board, on behalf of Island growers and packers, is extremely grateful to both levels of government for their support during this trying year. In addition, a combination of growers, industry partners, provincial government, and private individuals contributed to a fund established to offer a reward for information leading to the arrest and conviction of the person or persons responsible for potato tampering. This reward reached a maximum value of up to \$500,000 but did not result in significant leads resulting in an arrest. Nonetheless, the Board wishes to thank anyone who contributed to this effort.

In an effort to sustain a viable and expanded seed industry on PEI, the Elite Seed Farm continues to produce early generation seed for Island growers and continued improvements to production are ongoing. Seed production at the Elite Seed Farm grew in 2015, and virus results were very low. Province-wide virus levels in 2015 seed potatoes appear to be good based on results of post-harvest tests, giving Island seed growers a good crop to market for 2016 plantings. 2014 seed had excellent results from the post-harvest test. Costs of production, unpredictability and increased testing costs for PCN and potato wart continue to be issues of concern.

Changes in CFIA operations are also a challenge for seed and table growers and an area the Board is trying to work to improve - closure of office in Borden being one example. Regarding seed export, an incoming phyto mission from Uruguay was a positive initiative in 2015. The Board hopes to be able to continue with those kind of efforts to improve access in international markets.

The Board continues to invest in research projects aimed at improving return for Island growers as well as improving the economic and environmental sustainability of our industry. Wireworm continues to be a major research priority for growers, along with addressing yield variability, storage optimization, variety evaluation, crop rotations, nutrient management, and more. A successful Wireworm Research and Extension Seminar was held in March with strong attendance, and the Board also became a partner on a large research initiative with Potatoes New Brunswick and Agriculture & Agri-Food Canada on improving soil health and improving potato yields. Additionally, the Board continues to support and promote Fertilizer Canada's Farming 4R Island Nutrient Stewardship initiative in collaboration with the Federation of Agriculture, the provincial government and the Kensington North Watershed Group.

As part of ensuring timely negotiations of profitable contracts, a professional facilitator was used again in 2015 for contract negotiations between Cavendish Farms and processing growers. This resulted in a contract being agreed upon without going to binding arbitration with Cavendish Farms. Contracts with McCains were also settled without arbitration in 2015. The Potato Processing Committee continues to be active in collecting information from across North America as well as representing Island processing growers in negotiations with processors, with a long-term objective to continue diversification and expansion of contracted volume for Island growers.

Recently elected to a second year in the Chairman position is Alex Docherty. Vice-Chairman for 2015 is Rodney Dingwell and Secretary-Treasurer is Darryl Wallace. They are joined by Directors Don Godfrey, Owen Ching, David Francis, Kirk Shea, Glen Rayner, John Hogg, Wayne Townsend, Fulton Hamill, and Jason Hayden. Ashton Perry is the Young Farmers Representative to the Board.

**Dairy Farmers of Prince Edward Island  
2015 Activities Report  
for  
PEI Federation of Agriculture**

### **Events**

The Dairy Farmers of PEI (DFPEI) annual general meeting was held on 8 April 2015 in Summerside, PEI. The event addressed key business operations and was well attended by producers, industry leaders from the Maritime Provinces and Quebec, as well as representatives from Dairy Farmers of Canada and the Canadian Dairy Commission. DFPEI held its spring district meetings in February and fall district meetings in November. These meetings are held in Summerside and Charlottetown to accommodate producers in each district.

### **Milk Pricing**

The national fluid milk pricing formula is used in every province except Newfoundland and Labrador. It generates a price adjustment once per year (in February), if warranted. PEI and the other P5 provinces (PEI, Ontario, Quebec, New Brunswick and Nova Scotia) received a fluid milk price decrease of \$0.49/hL for Classes 1(a) and 1(b) in February 2015. The CDC decreased butter and skim milk powder support prices, effectively decreasing the price of components used in industrial milk products, by 1.8% as of 1 March 2015.

### **Levies**

The DFPEI administration levy was decreased to \$0.2042 per Kg of butterfat produced as of 1 December 2014. The promotion levy decreased to \$0.3728 per Kg of butterfat produced and the research levy rate remained at \$0.0050 per Kg of butterfat.

### **National and Regional Agreements**

***The Agreement on the Eastern Canadian Milk Pooling (P5 Pool)*** – The agreement continued to function effectively in 2015. The P5 provinces continue their work to improve the function of milk movement obligations and milk allocation to processors.

DFPEI continues to benefit from its participation in the P5 quota policy group. The first five year review since quota policy harmonization resulted in several significant policy changes. Most notably, all non-saleable quota held by PEI dairy producers was converted to saleable quota; and the price limit (cap) on quota traded through the DFPEI quota exchange was reduced from \$25,000 to \$24,000 per Kg of daily quota, effective 1 August 2015. Changes to the P5 New Entrant policy will be implemented in 2016.

***The National Milk Marketing Plan*** - The Canadian Milk Supply Management Committee (CMSMC) continues to manage Canadian dairy industry policies under the national milk-marketing plan. This committee is also responsible for management of programs to remove surplus solids not fat from the Canadian market. No changes were recommended for the National Milk Pooling (P9) agreement.

### **Policy Changes**

***Quota Policy*** – Production in PEI and the rest of the P5 was steady leading into 2015. An unusually strong demand for dairy products, particularly in retail butter sales, prompted the P5 to announce a producer quota increase of 2% effective 1 March 2015. PEI producers also received a total of twenty-



two extra incentive days from March to November 2015. Furthermore, a 2% producer quota increase was issued effective 1 December 2015 to fill all milk markets. PEI ended the 2014-2015 dairy year in an under quota position at 98.38%, and the P5 cumulatively ended the year at 100.54%. Producers made conscientious efforts to maintain their production near 100%.

**Solids Not Fat Policy** - DFPEI continued its solids not fat (SNF) production control policies implemented in 2005, with minor adjustments to meet the evolving P5 policies. PEI finished the 2014-2015 dairy year at 2.2047 kg of SNF per kg of butterfat produced, which is under PEI's SNF to butterfat target ratio of 2.2840. The national SNF to butterfat target ratio was 2.3130. Based on the past production pattern, PEI should stay within its target without altering its current SNF production control policy.

**New Entrant Program** - The P5 New Entrant Program started one new entrant in PEI in 2014-2015. PEI can only accept one new entrant a year under the P5 New Entrant Program. PEI currently has seven new entrants participating in the program.

**Regulatory Activity** – DFPEI is the administrative authority for most milk production and transportation activities in the province. These activities include: farm inspection; enforcement of production and quality regulations; and the licensing of transporters, milk graders, processing plants and fluid milk distributors. DFPEI staff ensures compliance with orders through a system of progressive discipline.

**Quota Exchange Activity**

The maximum quota price limit was reduced to its planned maximum of \$24,000 on the August 2015 quota exchange. This means it is possible for the quota price to clear at less than \$24,000, but it cannot exceed that limit.

Milk Quota Exchange Summary, 2015 Calendar Year				
Sellers	Buyers	Exchange Volume	Average Price	Sales Value
31	80	245.77 Kg	\$24,648.33/Kg	\$6,005,544.80

**Quota Lease Activity**

Leasing quota has been a management tool available to producers since 2005. Lease volumes on the exchange decreased in 2015 compared to 2014, and the amount of daily kilograms leased through producer to producer contracts in 2015 was higher than the amount leased in 2014. At any given time in 2015 the average number of daily kilograms leased through producer to producer contracts was 242.8 Kg, which is approximately two percent of PEI's total quota allocation. At any given time in 2015 the average number of daily kilograms leased on the exchange was 56.5 Kg, which is approximately half a percent of PEI's total quota allocation.

Milk Quota Lease Summary - 2015 vs 2014 (calendar year)			
Exchange 2015	Exchange 2014	Contract 2015	Contract 2014
56.5 Kg	94.0 Kg	242.8 Kg	187.2 Kg

**Conclusion**

The PEI dairy industry has seen many important changes in 2015 and continues to evolve in response to its market. The supply management system has proven its ability to create a fair and stable marketing environment for milk. Producers remain dedicated to protecting supply management from the trade and economic challenges it faces.

Respectfully Submitted by the Dairy Farmers of Prince Edward Island Board of Directors





## PEI Hog Commodity Marketing Board

**Mandate/Powers** – The mandate and powers of the Hog Commodity Marketing Board are found in the Hog Commodity Marketing Regulations. Section 40 of the Regulations vests in the Board the powers necessary to enable the Board to promote, control and regulate the marketing of hogs within the province, including the power to prohibit any aspect of the marketing of hogs. The Board has also been conferred federal power to regulate the marketing of Prince Edward Island hogs in interprovincial and export trade under the *Agricultural Products Marketing Act* (Canada).

At December 31, 2015, the board and staff consisted of the following:

### **Board of Directors**

Paul Larsen, Chair

Scott Drake, Director

Dale Murray, Vice-Chair

Ian Shaw, Director

Scott Dingwell, Secretary

David MacKenzie, Director

### **Executive Director – Tim Seeber**

**Industry Statistics** - The Board reported that 19 hog producers marketed just under 60,000 finished hogs during 2015 with a farm gate receipt value of approximately \$10.85 million. Again the number of hogs is relatively static from 2014 but the value of the hogs marketed was lower by almost \$3.4 million which is a decrease of over 24% from the previous year when Porcine Epidemic Diarrhea drove supply down and markets up. Isowean shipments on the other hand increased from 2,400 in 2014 to 13,074 in 2015 and this number is expected to increase marginally again in 2016. With the status of a couple of larger production sites in question the forecast for 2015 is for market hog numbers to potentially decline to around 50,000. Including breeding stock, isowean, weaner, and feeder pig sales, the 2015 total numbers sold was approximately 77,860 which is a 17% increase over 2014. These figures do not include approximately 2,000 hogs that are processed through provincial establishments annually.

During 2015 the Canadian swine herd avoided a resurgence of Porcine Epidemic Diarrhea (PED) through diligent bio-security. Though only Saskatchewan has witnessed any expansion in Canada, the control of PED and steady market pricing in 2014 has stimulated some increased production in the United States and combined with tight slaughter space in USA the market pricing is anticipated to see downward pressure for 2016 until 2 new plants come on-stream sometime in 2017.



## Prince Edward Island Wild Blueberry Growers Association

**Mandate** - The Prince Edward Island Wild Blueberry Growers Association was designated a commodity group under Part III of the *Act* on August 10, 2001.

**Board of Directors** - On December 31, 2015, the Board consisted of:

John Handrahan, President  
Stephanie Compton, Vice President  
Tom Matheson  
Rob MacLean  
John MacDonald

Bill Harper, Treasurer  
David MacNeamey, Secretary  
Kevin Carver  
Colin MacAulay

**Executive Assistant** - JoAnn Pineau

**Industry Statistics** - In total, PEI produced 27,897,006 lbs of blueberries in 2015. This includes a 1% estimate of fresh fruit. In comparison, PEI produced 22,741,762 lbs in 2014 and 16,183,752 lbs in 2013. An annual levy of \$0.008 per pound is collected from wild blueberry growers by processors.

**Activities** - The 14<sup>th</sup> year of the PEI Wild Blueberry Growers Association was a productive and successful one. The Board was involved in a broad range of educational, promotional, research and industry advocacy activities. The Association continues to hold producer information sessions, demonstrations and tours in cooperation with Chris Jordan, Berry Crop Development Officer / Provincial Apiarist, PEI Department of Agriculture & Forestry.

The 2015 PEI Blueberry Information Day and Annual General Meeting of the PEI Wild Blueberry Growers Association had a significant turnout with more than 100 attendees. A wide range of presentations focused on issues such as pesticide enforcement, reducing spray drift, Sclerotinia Berry Drop, leaf spot diseases, creeping perennial weeds, global blueberry market changes, Asian markets, sucking bugs, and pollination.

The Association also hosted the PEI Blueberry Workshop Series on July 29<sup>th</sup>-31<sup>st</sup> in Tignish, West St. Peters, Rollo Bay and Mount Vernon. 64 attendees took in a variety of information taught through visual, auditory and kinesthetic demonstrations. Key topics such as blueberry fertility, pest identification and pesticide timing, as well as pollination were presented by qualified individuals with a vast background in nutrient management, crop scouting and the wild blueberry industry as a whole.



## PEI Wild Blueberry Growers—continued...

A central objective of the Association is to facilitate and be involved with research initiatives that benefit the wild blueberry industry as a whole. This year the Association aided research initiatives on the effects of early pollination, fescue management and Atlantic Honey Bee pollination, as well as a comparative analysis of sales and market logistics. The PEIWBGA will continue to address issues of importance to the industry and welcomes any input.

Our Executive Assistant, JoAnn Pineau, continues to provide the PEI Wild Blueberry Growers Association with day to day management of operations, in addition to acting as an Industry Development Officer for the PEI Federation of Agriculture.

2015 has been a year of significant advancements and PEIWBGA are looking forward to hosting the 2016 Blueberry Information Day and AGM on April 5<sup>th</sup>.



### Summary of activities 2015.

- Held our Annual meeting in April at the Farm Center with presentations from various stakeholders in the industry.
- Sponsered a workshop in May to certify woodlot owners for the Pilot Project on Buffer Zone Harvesting. This was in co-operation with Dep't of Forestry and Dep't of Environment.
- Held a educational workshop on Intergenerational Transfer of Woodlots on PEI at the Farm Center in September.
- Through or participation in PEIFA, helped to increase our membership by over 40%
- Met with the new Minister of Communities, Land and Environment -- the Hon. Robert Mitchell – to discuss our joint interests and concerns for the industry
- Met on a regular basis with the Board of Directors and sent a representative to the PEIFA monthly meetings.

The Woodlot Owners Association would like to note that we really appreciate being accepted as a Commodity Group under the PEIFA and that we are alive and well and growing. We hope for continued co-operation and collaboration in the future.



#### Prince Edward Island Sheep Breeders Association Report to the Canadian Sheep Federation 2015

The provincial sheep flock continues to grow with interest from existing producers adding to their number of breeding ewes and from new entrants to the industry. It is estimated that there was a 28% increase in the provincial ewe population from 2010 to 2015 (January 01). Sheep producers continue to strive to find markets, some selling locally produced lamb at the farm-gate or through Island Farmer's Markets while others diversify by selling wool products. MacAusland's Woolen Mills, crafting beautiful wool blankets and wool yarn, continues to be in operation and Belfast Mini-Mills Ltd. designs and manufactures fiber processing machines sold world wide. The Mini-Mills processes sheep wool while specializing in developing mills for exotic fibers such as Alpaca, Llama, Mohair, Qiviut and Cashmere. There is renewed interest in producing lamb for the Northumberland Marketing Cooperative and Island producers are pleased that Northumberland has received its federal inspection licence. Locally produced lamb in greater quantity will now be able to flow throughout the region and back the province year round.

Island sheep and goat producers continue to be interested in attending training sessions and becoming involved in premise registration. Programs offered under Growing Forward II are Genetic Enhancement, Flock/Herd Health Initiatives, and Feed Efficiencies Initiatives. This fall, such sessions as ruminant health management, offered by provincial agriculture staff and the Atlantic Veterinary College (AVC) and during the PEI Sheep Breeders' Association Annual General meeting Dr. Jeff Wichtel, Dean of the Ontario Veterinary College (formally of AVC) will deliver the results of the *Increasing Perinatal Lamb Survival in Island Sheep Flocks Project* the research goal of which was to enhance the profitability and diversity of sheep production systems in PEI.

There were two social events celebrating lamb, one sponsored by Harmony Meadow Farms, November 6<sup>th</sup> in Belfast, PE and our producer and general public lamb dinner, held at the Red Shores Racetrack and Casino, Charlottetown, on November 7<sup>th</sup> was a sold-out event and a much more than a great success this year - so much so that those attending are asking for copies of Chef Andrew Smith's recipes.

As always, the Board of Directors for the PEI Sheep Breeders Association is very appreciative of the support from provincial specialists, Atlantic Veterinary College professionals, respective laboratory staff, agricultural guest lecturers, and financial assistance through provincial and federal government programs.

PRINCE EDWARD ISLAND  
CATTLE PRODUCERS



## Report to PEI Federation of Agriculture Annual Meeting

The PEI Cattle Producers (PEICP) held their Annual Meeting on April 7, 2015. Board members include Brian Morrison, Jeremy Stead, David McCloskey, Sterling Jay, Kenneth MacEachern and Derrick Annema. Ex-Officio Director, Ranald MacFarlane represents Dairy Farmers of PEI.

In April of 2015 the PEICP launched its fifth annual PEI Burger Love campaign. This campaign was established to raise the awareness of the importance of the PEI beef industry to agriculture and to PEI in general. This social media campaign saw an increase in all aspects of the campaign from the previous year. Sixty restaurants sold over 145,527 hamburgers during the month of April, again surpassing the number of burgers sold the previous year. The 2015 PEI Burger Love's most loved burger was the Cabbage Patch, from the Home Place, another first time participant in the campaign.

The PEICP continues to deliver the VBP program in the Atlantic Provinces by providing information and workshops. We have seen a large increase in the number of animals that are Age Verified, as we continue to offer third party Age Verification to producers. The Livestock Development for Beef was delivered through the PEICP once again. Funding for this program is provided through Growing Forward II and offers qualifying producers money for Premium Sires, Genetic Heifer Renewal, Seed-stock Testing, RFID reader purchases, Scales purchases, and components of Feed Efficiency. Funding for Handling Facilities was reoffered again this year.

The PEICP coordinates the *Prince Edward Island Certified Beef* brand. This role is to communicate between the producers and Atlantic Beef Products to ensure the animals meet brand specs and that supply is keeping up with the demand. To date, there are approximately twenty-four feedlots and seventy-four cow-calf producers on the brand. This is a premium brand that demonstrates continuous growth in demand.

The PEICP continues to administer the Deadstock Removal service to beef producers. The service is cost shared with Dairy Farmers of PEI, and the province, who contributed \$350,000.00 to the service. The remaining cost of \$850,000.00 has to come from industry. There has been uptake of just over 50% of all beef producers, however; this group represents a higher percentage of production. Those who did not pay are not eligible for any programs or services offered to PEI producers, and must deal with deadstock removal themselves.

The PEICP is a member of the Maritime Beef Council (MBC). The council represents the three Maritime cattle organizations on various issues. Quarterly meetings were held throughout the year, with the annual meeting taking place on Sept 9, 2015. The MBC continues to work on various issues that affect producers from the region such as harmonised levies, traceability and research. The MBC hosted a Maritime Beef Conference in March, 2015 in Moncton, NB and is planning another for March 18-19, 2016. The conference had terrific speakers and was well attended with very positive feedback from participants..

Atlantic Beef Products has been consistently processing 400 hd/week. This includes fats as well as culls cows and lean Holstein. ABP has a growing demand for ground beef so they are encouraging more producers to raise Holstein steers to supply them with lean animals for ground beef. Some producers have chosen to finish dairy steers and heifers, and while this sector is expanding, ABP has been busy developing a payment grid aimed to meet everyone's satisfaction.

A Humane Handling course was delivered to producers by Jane Morrigan of NS. This practical overview was a great reminder of why we need to keep animal welfare top of mind. Producers on the CIB brand are required to take this training.

The PEICP finances its operations through the collection of a mandatory, non-refundable, levy of \$4.00 per head, collected at the time of slaughter. During 2014, \$64,000.00 in levies was collected from producers. In recent years, the costs of running the organization continued to climb as the number of levies collected declined. During the 2015 Fall District Meetings, the PEICP presented its concerns with the help of national representatives from CCA, CB and the Beef Cattle Research Council. An increase in the cost of levies is necessary to meet the PEICP's administrative needs, and its obligation to the CCA and Canada Beef. The PEICP is planning to disclose its revised levy collection plan at its Spring District Meetings. Licenses for buyers may be required in order to capture levies on cattle leaving the province. If this is the case, it is almost certain a plebiscite will be required.

We are pleased to have Ivan Johnson represent PEI on the CCA Board of Directors and it's Executive, and John MacDonald; on the Canada Beef Board of Directors.

Respectfully submitted by: Rinnie Bradley, Executive Director of the PEI Cattle Producers.



### **PEI Certified Organic Producers Cooperative**

The PEI Certified Organic Producers Cooperative has a Board of 6 members, who are all volunteers and own and operate certified organic farms. The COPC has no permanent staff and at present employs a research director with funding till 2018.

In the past year – I highlight the following on behalf of the Board and our research coordinator:

#### **New research coordinator**

Stephanie Palmer. Stephanie grew up on PEI, but has just recently returned home after completing her PhD in Europe.

Stephanie will be assisting in the coordination of ongoing organic research, but will also be spending a lot of time developing a participatory research network among PEI organic producers. The idea behind this network is to create a mechanism for conducting quality experimental research on participating farms, and for sharing the results of this farm-level research among peers, so that we can learn from each other's' mistakes and successes.

#### **2015 Old Home Week Organic Cooking Demos**

10 PEI COPC members participated in the 2015 OHW Organic Cooking Demos. Each day from August 13 to 22, registered dietitian Jessica Matheson showcased a producer and the product(s) they selected to a crowd of OHW attendees. This was a great outreach and visibility activity again this year - for the participating farmers, the PEI COPC and organic agriculture more generally.

#### **Organic Hemp FIELD DAY (August 17)**

The PEI COPC hosted a half-day organic hemp field day on August 17, with representatives from Saskatchewan, Ontario, Quebec, and PEI presenting on various aspects of producing, breeding varieties suitable for our Island conditions and purchasing requirements. Some attendees were:

- PhytoGene Resources Inc., a Research & Development company based in Orléans,
- Roger Henry and Aaron Mills Agriculture and Agri-Food Canada Harrington Research Farm,
- Mr. Larry Marshall, of Marshall Farms Ltd in Shellbrook, Saskatchewan.
- Representatives from Les Aliments Trigone, the main purchaser of organic hemp in eastern Canada, outlined their operation and requirements.

The day concluded with a visit to our newest Board member, Matt Ramsay's, field of PhytoGeneCanMa hemp.

#### **On-Farm Plant Breeding on PEI FIELD DAY (August 24)**

On farm plant breeding is advancing the development of brand new, grown-in-Canada varieties that are well suited for organic production and adapted to our local climate.

We heard from PEI farmer Matt Ramsay - working with populations of wheat and oat - and Anne Kirk - head of the national plant breeding program at University of Manitoba. They spoke to the research design & methods, varieties, selection process, and how this work is contributing to research by dozens of farmer researchers across Canada.

#### **On Farm projects:**

Members are particularly interested in undertaking through on-farm research, cover **crops** and on the use of **environmental (temperature, humidity, etc.) sensors and monitoring**. A number of members have already expressed interest in and even gotten to work on outlining on-farm research, focused around the use of different cover crops (green manures, overwintering cover, etc.) and using environmental sensors to help in farm management decisions and on-farm research. These first projects will be discussed at a winter farmer-researcher meeting toward developing more projects next spring

### **Organic Harvest Meal**

It was a full house at the PEI Brewing Company for this year's sold-out Organic Harvest Meal, the evening of Sunday, October 4th. Chef Adam Loo took the lead of food preparation again this year, recruiting and heading up a team of seven excellent chefs from the PEI Brewing Company, as well as his restaurant, the Merchantman. Food for the meal was sourced from more than 20 of our own PEI COPC farmers (thank you!), and rolled in early in the day, many thanks to volunteers and special help from Lee Clarke/Plate It ([justplateit.com](http://justplateit.com)). Words from PEI COPC president, Matt Dykerman (Red Soil Organics) and vice-president, Amy Smith (Heart Beet Organics), PEI Premier, Wade MacLauchlan, and keynote speaker, Todd MacLean, as well as music from the Amanda Jackson Band, filled our minds & souls to go along with the delicious feast and celebration of PEI Organics. Many thanks to our event sponsors for their contributions to the success of the event: Sobey's, Ecocert Canada, Solarvest, Veseys Seeds Ltd., Maritime Electric, Aliments Trigone, Beanz Espresso Bar & Café, Speerville Flour Mill & L'Ancêtre.

### **Small farm record-keeping/profitability analysis**

Market gardeners and new small farm entrants felt there was insufficient capacity for accurate financial record keeping and profitability analysis. This is not uncommon amongst new entrants in highly diversified agriculture. Through its research Coordination project, the PEI COPC will be providing assistance to this group of its members in addressing this issue, and thereby in increasing farmer capacity for effective business management, by hiring one or several individuals as a team on a contractual basis to (1) carry out training in record keeping, data management and profitability analysis (business coaching/mentorship) in a first instance, and (2) to benchmark the farm performance of several participating members for the 2016 growing season

### **Organic Certification Assistance**

The PEI COPC manages the Organic Certification Assistance program on behalf of the province of PEI's Organic Industry Development Program again this year. Payments will be made for 75% of certification fees, up to \$500.

### **The Lean Farm webinar: Work smarter, not harder to improve farm efficiency, by Ben Hartman**

The PEI COPC hosted a webinar by farmer & author of "The Lean Farm: How to Minimize Waste, Increase Efficiency, and Maximize Value and Profits with Less Work".

"Ben Hartman and other farmers increasingly find that incorporating the best new ideas from business into their farming can drastically cut their wastes and increase their profits, making their farms more environmentally and economically sustainable. By explaining the lean system for identifying and eliminating waste and introducing efficiency in every aspect of the farm operation, The Lean Farm makes the case that small-scale farming can be an attractive career option for young people who are interested in growing food for their community. Working smarter, not harder, also prevents the kind of burnout that start-up farmers often encounter in the face of long, hard, backbreaking labor."

### **2016 Soil Management & Best Practices workshops**

This year's event will include the workshop of Klaas & Mary-Howell Martens of Lakeview Farm (USA), featured at this year's Acres USA, on "Building a Healthy Farm System". Topics will include reading your soil, managing soil fertility, true crop health, crop & biological diversity, modern science & technology as it applies to eco-farming, conventional/transitional/organic farming systems, and systems design. David Blanchard of Pleasant Hill Farm (NS) will give a practical, in depth look at cover crops - from which ones to use and how to choose them to the economic benefits often not considered. Mark & Sally Bernard of Barnyard Organic (PE) will share their experience of converting their conventional family farm to organic, and their soil restoration plan. Kyra Stiles, PEI Department of Agriculture & Fisheries will discuss new ways to incorporate biological and physical indicators into our soil testing, and what this means for a fuller understanding of our soil's health.



# 75th Annual General Meeting Sponsors

## Platinum Sponsors



Agriculture and Forestry



SUMMERSIDE'S ACTION CORNER

## *75th Annual General Meeting Sponsors*

### *Gold Sponsors*

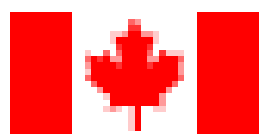


**THANK YOU TO ALL OUR  
GREAT SPONSORS FOR YOUR  
SUPPORT**



# *75th Annual General Meeting Sponsors*

## *Silver Sponsors*



Agriculture and  
Agri-Food Canada



**Atlantic**  
**BEEF PRODUCTS**

MORNEAU  
SHEPELL



MEDAVIE  
**BLUE CROSS™**

# 75th Annual General Meeting Sponsors

## Silver Sponsors



**PROTECTING EACH OTHER  
SINCE 1885**  
125th ANNIVERSARY  
1885-2010



## *75th Annual General Meeting Sponsors*

### *Silver Sponsors*



**RBC Royal Bank**



**Reliable  Motors**

**Home of the sharpest pencil in town!**

## 75th Annual General Meeting Sponsors

### Silver Sponsors



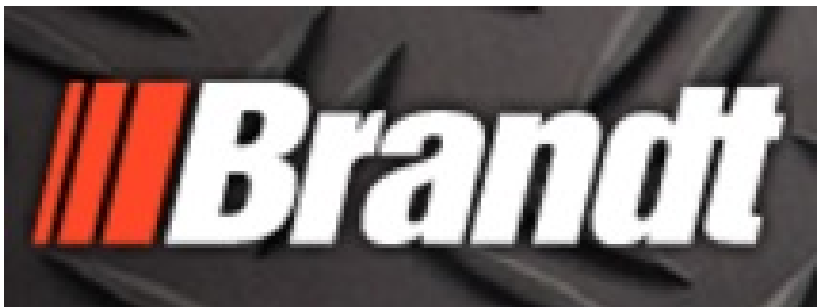
**PEI Sprayer Calibration Program**





# 75th Annual General Meeting Sponsors

## Silver Sponsors



Pickard Financial Management Group



## 75th Annual General Meeting Sponsors

### Bronze Sponsors



McCain Produce Inc.

the potato  
people

ISLAND FARMER

## Guest Speaker Bios



**Honourable Lawrence MacAulay**  
**Minister of Agriculture and Agri-Food Canada**

Lawrence MacAulay, Member of Parliament for Cardigan, was first elected to the House of Commons on November 21, 1988, and won his ninth consecutive election in October 2015.

Mr. MacAulay's Cabinet appointments have included Solicitor General of Canada, Minister of Labour, Secretary of State (Veterans), and Secretary of State (Atlantic Canada Opportunities Agency). He has served as Critic for Fisheries and Oceans and Seniors. In addition, he was Vice Chair of the House of Commons Standing Committee on Fisheries and Oceans.

Mr. MacAulay was born on September 9, 1946, in St. Peter's Bay, Prince Edward Island. Mr. MacAulay was previously a seed potato and dairy farmer and businessman. He and Frances Elaine O'Connell were married in 1972 and have three grown daughters: Carolyn, Rita and Lynn.

Lawrence MacAulay now proudly serves as Canada's Minister of Agriculture and Agri-Food.

## Guest Speaker Bios



**Honourable J. Alan McIsaac**  
Minister of Agriculture and Fisheries

### **Biography**

Alan McIsaac was first elected as a Member of the Legislative Assembly in the provincial general election of 2007 in District 5, Vernon River-Stratford, and was re-elected in both the 2011 and 2015 provincial general elections.

Mr. McIsaac served as a member of Treasury Board. He also served as chair of the Standing Committee on Agriculture, Environment, Energy and Forestry and was a member of the Standing Committee on Fisheries, Transportation and Rural Development, the Standing Committee on Public Accounts, and the Standing Committee on Education and Innovation. After re-election in October 2011, Mr. McIsaac was appointed Minister of Education and Early Childhood Development. Mr. McIsaac was vice-chair of the Council of Ministers of Education, Canada (CMEC) from 2013 to 2015. He also served as Minister of Transportation & Infrastructure from late 2014 to the spring of 2015.

In addition to his new duties as Minister of Agriculture & Fisheries, Mr. McIsaac chairs the Committee on Priorities and is Government House Leader.

Prior to entering politics, Mr. McIsaac was a dairy farmer and small business operator. He has held many leadership roles in the dairy industry at the provincial, regional, and national levels for over 32 years, including chairing the Provincial Milk Marketing Board and as the Atlantic Canada Director on the Board of Holstein Canada. He also served on the executive of the Prince Edward Island Federation of Agriculture.

Alan has been very active in his church and his community. He has coached hockey and baseball and served on the board of directors of the local Fire Department. He has also served on the Home and School Association at Glen Stewart and Charlottetown Rural High Schools.

He and his wife Joanne reside in Mermaid. They have four sons, Andrew (Martine), Joshua (Faith), Stephen and Michael (Emily).



## Guest Speaker Bios

### **RON BONNETT , President, Canadian Federation of Agriculture**

Ron Bonnett, President of the Canadian Federation of Agriculture (CFA), has had a long and varied career in agriculture.

In the mid-1980s, he became the founding president of the Algoma Federation of Agriculture, where he helped combat high interest rates. He also was engaged in municipal politics during this time. He served as councilor and reeve of the Township of Plummer where he advocated for rural economic development, inter-municipal cooperation, and a strong agriculture sector.

In 1997, Ron sat on the provincial board of directors for the Ontario Federation of Agriculture (OFA) and the OFA executive. He was the OFA Vice-President for two years, and also served as the OFA President for four years. During his time with OFA, Ron sat on the CFA National Council and CFA Executive, before becoming 2<sup>nd</sup> Vice-President in February 2007. He has held the role of CFA President since June 2010.

Ron is currently CFA's representative for Health Canada's Pest Management Regulatory Agency (PMRA) Advisory Committee and Board Member at Farm Management Canada. As an advocate of agriculture at the international level, Ron also sits on the Board of the World Farmers' Organization and played an active role in the organization's launch.

In addition to his work at CFA, Ron is also the current President of Beef Improvement Ontario and planning committee chair for Ontario's Agricultural Management Institute.

In 1975, Ron and his wife, Cathy, bought a dairy farm in Bruce Mines, located in Northern Ontario, which they operated until 1995. Since 1995, they have operated a cow-calf farm. Ron and Cathy have a son, Terry; a daughter, Veronica; and four young grandchildren.



### **Faith Matchett, CMA VP, Operations - Atlantic and Eastern Ontario**

Responsible for the overall operations in the Atlantic and Eastern Ontario regions, Faith joined FCC in 1999 and has held a number of positions. Previous to FCC, she held accounting and controller positions in the construction, mining, printing and agriculture sectors. As a Certified Management Accountant, Faith holds a Business degree and a Masters in Education from the University of New Brunswick. In July 2013, she was awarded the Fellows of The Society of Management Accountants (FSMA) designation – this is a prestigious, national honorary designation that recognizes CMAs, who by their achievements, bring distinction to the profession and serve as a role model for others.



Faith is a Director on the Board of CMA New Brunswick and an active member of the Moncton chapter of the Canadian Federation of University Women. She has been very involved with the Girl Guides organization over the years. Faith and her husband have two wonderful daughters, one who has completed her university education and is now working full time and one who is attending the University of New Brunswick in Fredericton.

## Guest Speaker Bios

### **Christine MacKinnon - acting Director of Municipal Affairs and Provincial Planning Department of Communities, Land & Environment.**

Christine is an agricultural engineer by training, and has worked with the Prince Edward Island government in the departments of agriculture, environment, intergovernmental affairs, and Executive Council Office. Christine served as the executive secretary to the task force on land use policy and the commission on nitrates in groundwater.

Currently, she is acting Director of Municipal Affairs and Provincial Planning with the Department of Communities, Land & Environment.

Christine is an active partner in SandyRae Farms, a 70 cow dairy farm, with her husband and son, located in Brooklyn, which is in the municipality of Valleyfield.



**Kim Griffin**

**Manager of Corporate Communications & Public Affairs—Maritime Electric**

Kim Griffin is the Manager of Corporate Communications & Public Affairs at Maritime Electric. She is from Blooming Point, PEI. She graduated from Mount Saint Vincent with a Bachelor of Public Relations and has held many senior leadership roles in PEI, Nova Scotia and Ontario with Labatt Brewery, Brewers of Ontario, Pepsi Canada and Seaman's Beverages before joining the team at Maritime Electric. She has held various volunteer positions with such organizations Junior Achievement PEI ( Past Chair) , Heart & Stroke Foundation PEI ( Past Chair of Razzle Dazzle Red Fundraiser), Island Nature Trust and Holland College Business Advisory Board. She resides in Charlottetown with her husband Danny and her two young sons, William and Henry.

## Guest Speaker Bios

### **Vernon Rodd**

**Soil and Water Research Scientist**

**Agriculture and Agri-Food Canada**

Vernon Rodd is a Soil and Water Research Scientist with Agriculture and Agri-Food Canada with expertise in soil, water and plant relations - special emphasis on organic and inorganic nutrient management. He graduated with a BSc. in biology and a minor in chemistry from UPEI and an MSc. in soil science from the University of Manitoba. Vernon has recently transferred from the Nappan Research Farm to the Charlottetown Research and Development Centre. He is a former adjunct professor at the Nova Scotia Agricultural College where he has served as a supervisor, committee member and an external examiner on numerous graduate student committees. He has been an invited speaker at the Eastern Forage Ruminant Network, the Canadian Society of Soil Science Waste Management Workshop, Atlantic Agricultural Science and Technology Workshops and various soil and crop improvement association meetings. Vernon has authored or co-authored 30 scientific and 69 other publications and made 90 technology transfer presentations. He co-authored Agriculture and Agri-Food Canada's publications: Research Strategy for Hog Manure Management in Canada and the Health of Our Soil.



### **Maryella Maynard**

**Chairperson– PEI Agriculture Awareness Committee**

Maryella has been the chair of the PEI Agriculture Awareness Committee for 2 years and represents Croplife Atlantic on the board. Her passion for agriculture began growing up on her family's dairy farm in West Prince and continued through her education at the NSAC and now in her working career in sales and agronomy with PEI Agromart.

## Guest Speaker Bios



**GEORGE SOMERS, MSc., MBA**

**Manager—Drinking Water and Wastewater Management**

**Department of Communities, Land and Environment**

George Somers has worked with the PEI Department of Communities, Land and Environment since 1988. He began by working on specific hydrogeological studies and later became the head of the Department's Groundwater Section. He now manages the Department's Drinking Water and Wastewater Management Section. As part of his duties, he has represented the Province of PEI on the Federal/Provincial/Territorial Drinking Water Committee since the early 1990's.

George received a BSc in Geology from Saint Mary's University in 1977, an MSc in Geology from the University of Western Ontario in 1984 and an MBA from Dalhousie University in 1988. Prior to coming to Prince Edward Island, his professional experience included conducting regional hydrogeological assessments, exploration for petroleum, coal and gold, and teaching as an assistant professor of geology at Saint Mary's University. In addition to his employment here with the Province in PEI, he has been a lecturer, teaching Geology at the University of Prince Edward Island for the past 10 years and has held a position as an adjunct faculty member with the Department of Health Management, Atlantic Veterinary College. His most recent area of research interest involved the use of stable isotope geochemistry to help understand environmental issues such as nitrate contamination of groundwater. During his spare time he enjoys cooking and gardening.



**Angus Orford**

**VP Customer Service—Maritime Electric**

Born on Prince Edward Island, Angus has over 30 years working with Maritime Electric and Fortis Ontario. His education includes an MBA from Dalhousie, a Bachelor of Science from UPEI and a Bachelor of Civil Engineering from the Technical University of Nova Scotia. He is a dedicated community volunteer and currently sits on the Board of the Downtown Residents Association and UPEI Engineering Advisory Board. He resides in Charlottetown with his wife Karen and their three children, Henry, Margaret and Malcolm.



# NOTES



# NOTES



# *2015 Annual Report*

